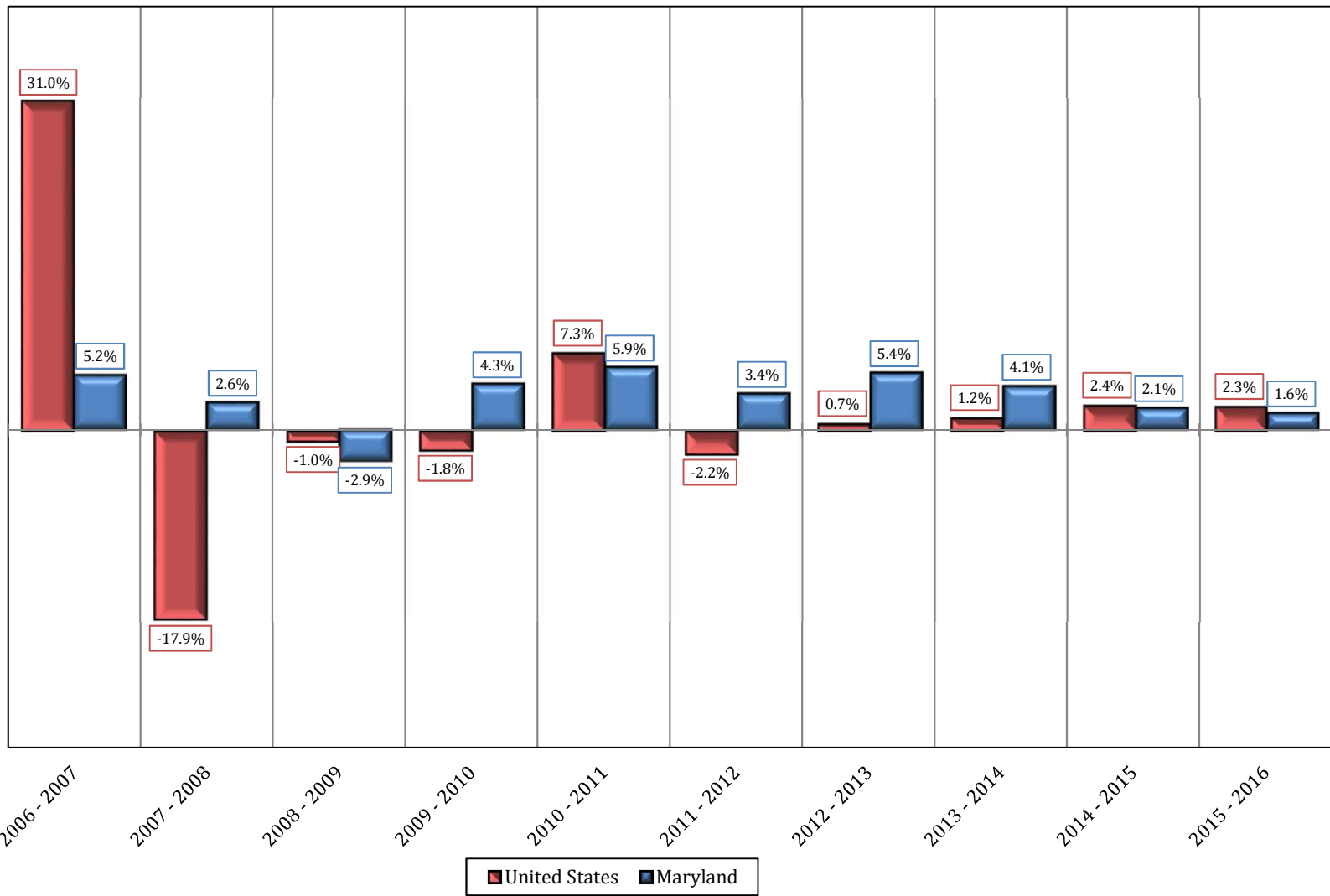


**Chart 1B.3 UNITED STATES AND MARYLAND  
New Single Family Home Mean Construction Value  
Percent Change: 2006 - 2016**



SOURCE: U. S. Bureau of the Census. Economic Indicators division. Residential Construction Branch. 2017.  
Prepared by MD Department of Planning. Planning Services Division. 2017.