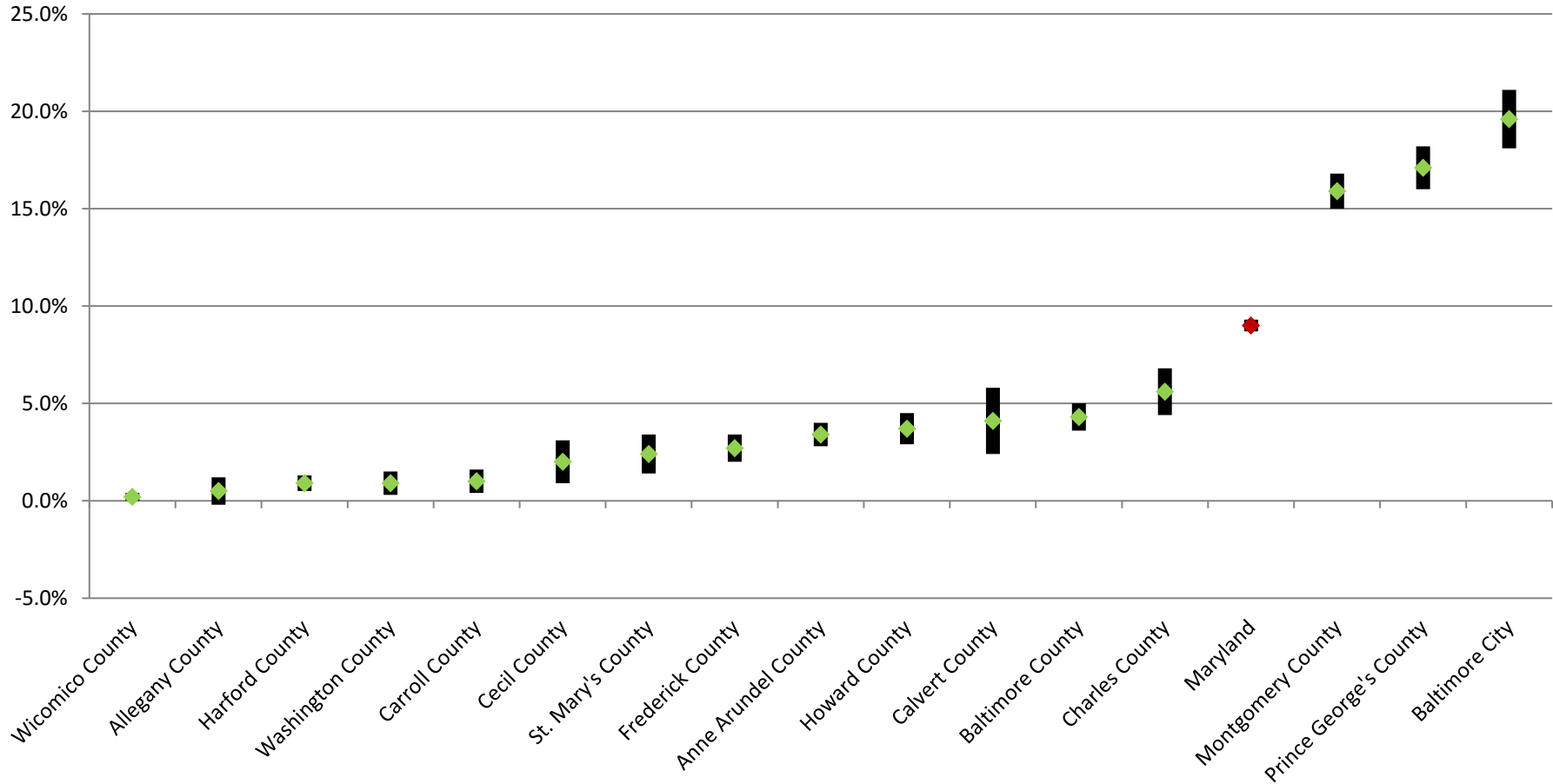


## Percentage of Workers 16 Years and Over Who Traveled to Work by Public Transportation in Maryland and its Jurisdictions, 2015 (with Margin of Error)



\* Apparent differences may not be statistically significant at the 90 percent confidence interval.

Prepared by the Maryland Department of Planning, from the 2015 ACS for the 16 counties covered (population of 65,000 or more), September 2016