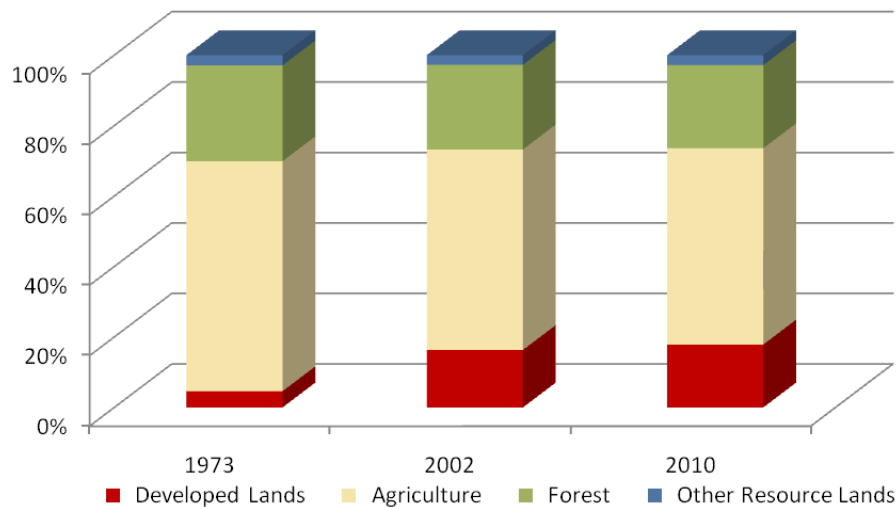


Talbot County

	Land Use in Acres		Land Use Change	
	2002 ³ Acres	2010 ² Acres	2002-2010 Acres	Percent
Very Low Density Residential ¹	8,542	9,269	727	8.5%
Low Density Residential	12,072	13,235	1,162	9.6%
Medium Density Residential	2,726	3,116	391	14.3%
High Density Residential	403	438	35	8.6%
Commercial	2,065	2,262	197	9.6%
Industrial	227	279	53	23.2%
Other Developed Lands/ Institutional/Transportation ¹	1,952	2,055	103	5.3%
Total Developed Lands⁵	27,987	30,654	2,667	9.5%
Agriculture	97,739	95,662	-2,077	-2.1%
Forest	41,270	40,513	-757	-1.8%
Extractive/Barren/Bare	281	489	208	73.9%
Wetland	4,380	4,339	-41	-0.9%
Total Resource Lands⁵	143,670	141,002	-2,667	-1.9%
Total Land	171,657	171,657		
Water	129,750	129,750		

	Land Use in Acres			Land Use Change
	1973 ⁴	2002 ³	2010 ^{1,2}	1973-2010 Acres
All Residential	5,122	23,743	26,057	20,936
All Non-Residential	2,785	4,244	4,597	1,812
Total Developed Lands⁵	7,907	27,987	30,654	22,748
Total Resource Lands⁵	163,613	143,670	141,002	-22,611
Total Land	171,520	171,657	171,657	
Water	129,887	129,750	129,750	

Land Use Change 1973 - 2010



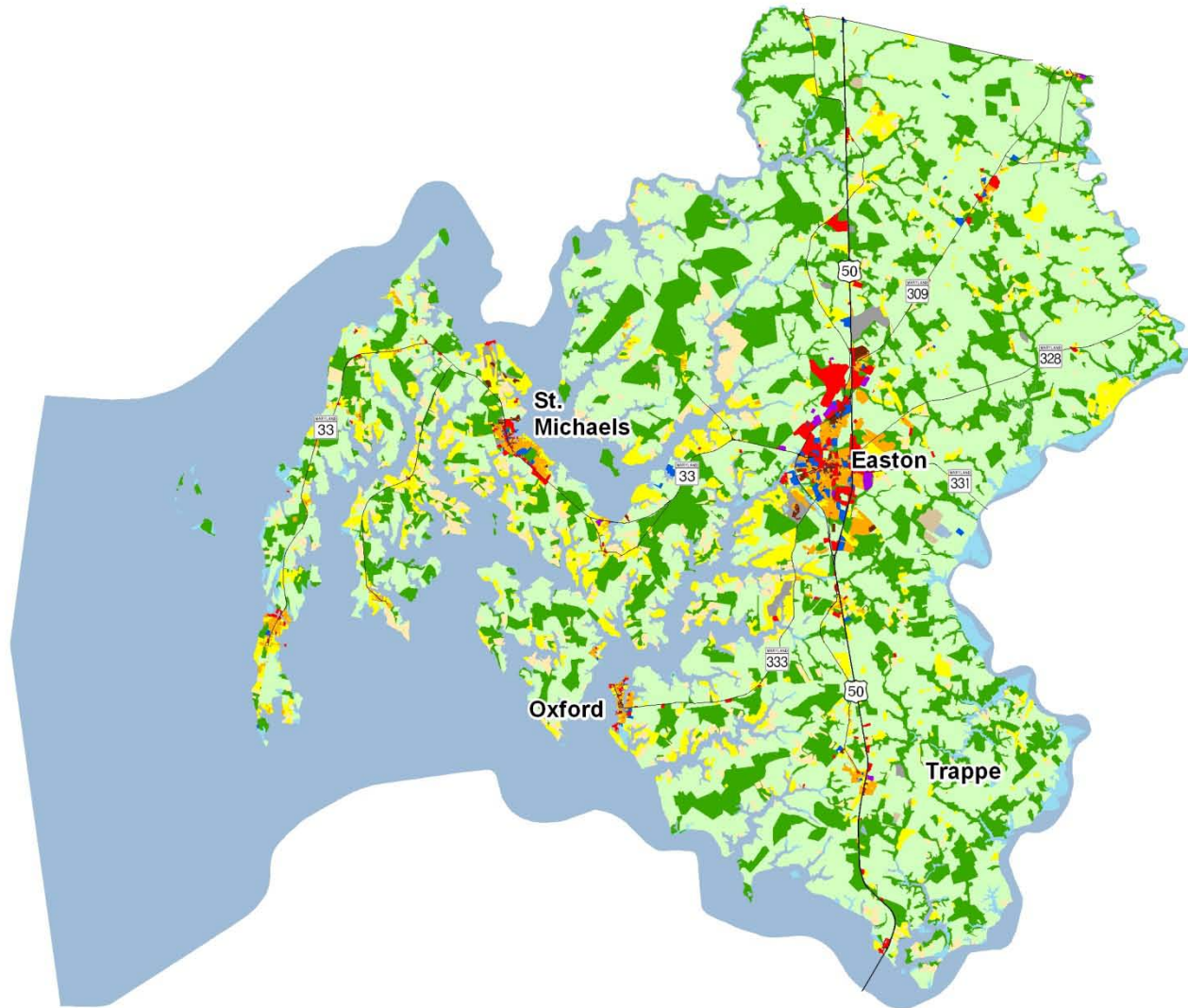
1. Two new categories have been added to the 2010 Land Use/Land Cover layer update; very low density residential development (191,192) and transportation (80).

2. Updates/modifications to the 2010 land use/land cover layers used the 2007 NAIP aerial imagery and parcel information from Maryland Property View 2008.

3. The original 2002 data were mapped using geo-rectified LANDSAT satellite imagery and 2000 MD Property View. In 2010 two new land use categories were added, transportation and very low density residential making it necessary to modify the 2002 land use/land cover layer to incorporate these categories for comparative purposes. Additionally, better imagery and property data information were used to make further modifications. The enhanced 2002 dataset is available upon request.

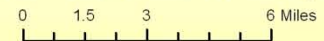
4. Very low density residential was not mapped in 1973, so there is no data associated with changes. Transportation was not mapped in 1973.

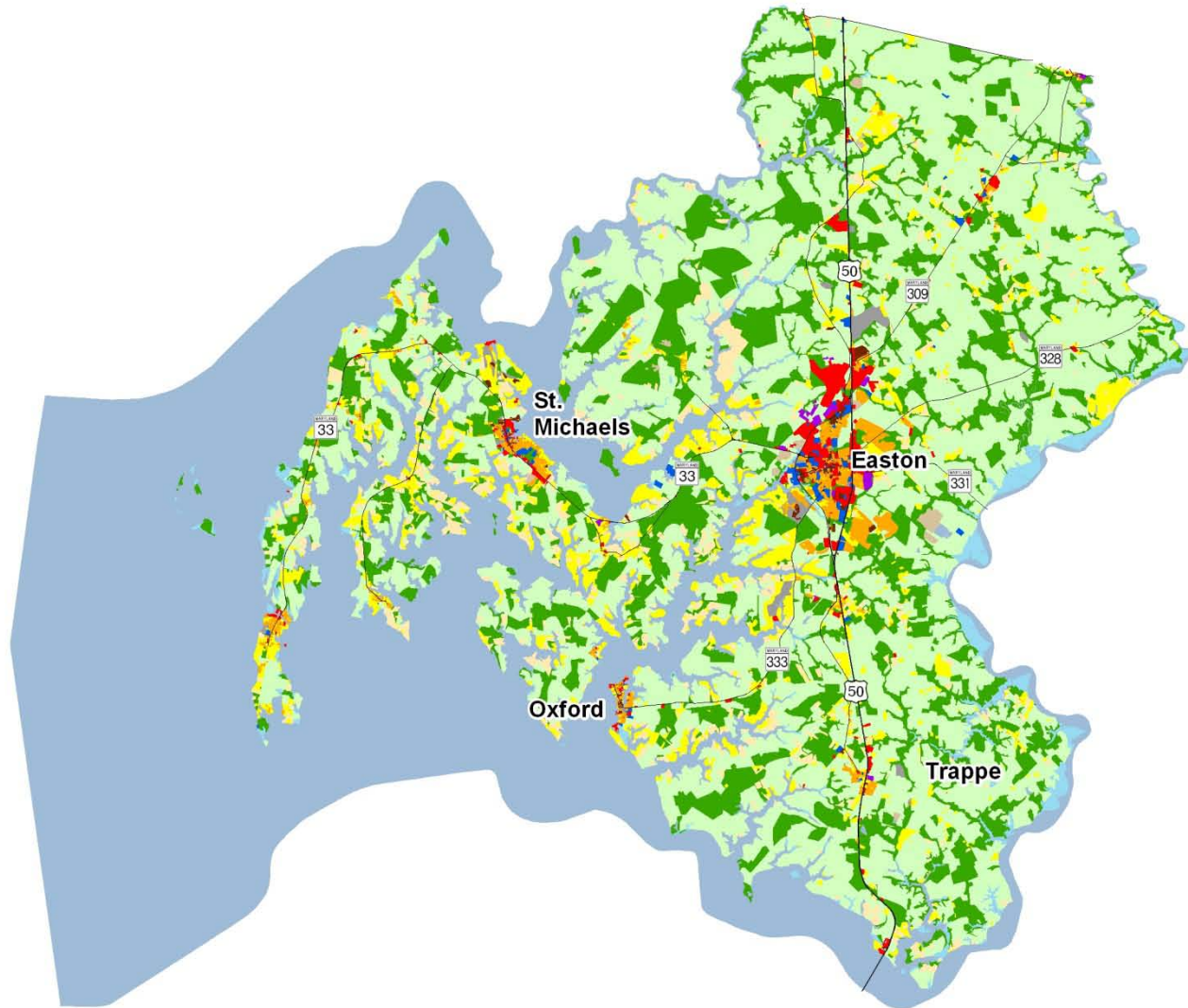
5. As noted above, new land use categories were added in 2010 and associated adjustments were made to 2002 data. Similar adjustments were not made to 1973 data, making it impossible to know how much change from 1973 is due to new development since then, versus misclassified land uses at that time. For these reasons, we suggest reliance only on change statistics for the aggregate land use categories, Total Developed and Total Resource Lands



Talbot County 2002 Land Use/Land Cover

1) The original 2002 data were mapped using geo-rectified LANDSAT satellite imagery and 2000 MD Property View. In 2010 two new land use categories were added, transportation and very low density residential making it necessary to modify the 2002 land use/land cover layer to incorporate these categories for comparative purposes. Additionally, better imagery and property data information were used to make further modifications. The enhanced 2002 dataset is available upon request.





Talbot County 2010 Land Use/Land Cover

1) Two new categories have been added to the 2010 Land Use/Land Cover layer update; very low density residential development (191,192) and transportation (80).
 2) Updates/modifications to the 2010 land use/land cover layers used the 2007 NAIP aerial imagery and parcel information from Maryland Property View 2008.





Talbot County New Development, 2002-2010

1) Updates/modifications to the 2010 land use/land cover layers used the 2007 NAIP aerial imagery and parcel information from Maryland Property View 2008.

2) The original 2002 data were mapped using geo-rectified LANDSAT satellite imagery and 2000 MD Property View. In 2010 two new land use categories were added, transportation and very low density residential, making it necessary to modify the 2002 land use/land cover layer to incorporate these categories for comparative purposes.

