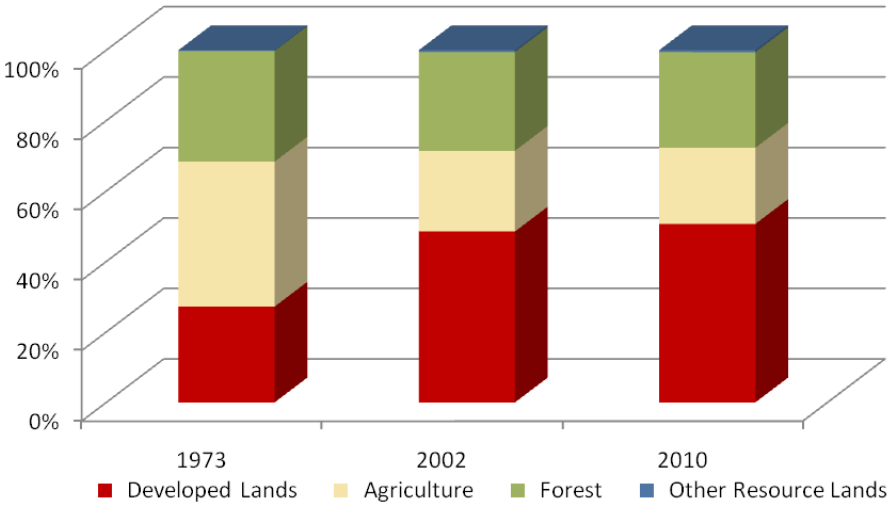


# Montgomery County

	Land Use in Acres		Land Use Change	
	2002 <sup>3</sup> Acres	2010 <sup>2</sup> Acres	2002-2010 Acres	Percent
Very Low Density Residential <sup>1</sup>	14,086	15,890	1,804	12.8%
Low Density Residential	40,975	43,374	2,399	5.9%
Medium Density Residential	50,696	51,677	982	1.9%
High Density Residential	14,275	14,802	527	3.7%
Commercial	6,784	7,198	415	6.1%
Industrial	4,972	5,070	97	2.0%
Other Developed Lands/ Institutional/Transportation <sup>1</sup>	21,900	22,458	558	2.5%
<b>Total Developed Lands<sup>5</sup></b>	<b>153,688</b>	<b>160,470</b>	<b>6,782</b>	<b>4.4%</b>
Agriculture	72,580	68,494	-4,087	-5.6%
Forest	88,812	85,998	-2,814	-3.2%
Extractive/Barren/Bare	257	376	119	46.4%
Wetland	1,438	1,438	0	0.0%
<b>Total Resource Lands<sup>5</sup></b>	<b>163,087</b>	<b>156,306</b>	<b>-6,782</b>	<b>-4.2%</b>
<b>Total Land</b>	<b>316,776</b>	<b>316,776</b>		
<b>Water</b>	<b>7,382</b>	<b>7,382</b>		

	Land Use in Acres			Land Use Change
	1973 <sup>4</sup>	2002 <sup>3</sup>	2010 <sup>1,2</sup>	1973-2010 Acres
All Residential	62,486	120,032	125,744	63,258
All Non-Residential	23,702	33,656	34,726	11,024
<b>Total Developed Lands<sup>5</sup></b>	<b>86,188</b>	<b>153,688</b>	<b>160,470</b>	<b>74,282</b>
<b>Total Resource Lands<sup>5</sup></b>	<b>230,807</b>	<b>163,087</b>	<b>156,306</b>	<b>-74,501</b>
<b>Total Land</b>	<b>316,995</b>	<b>316,776</b>	<b>316,776</b>	
<b>Water</b>	<b>6,581</b>	<b>7,382</b>	<b>7,382</b>	

Land Use Change 1973 - 2010



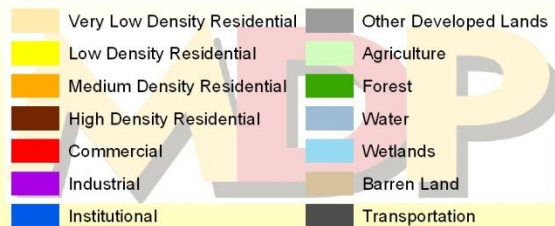
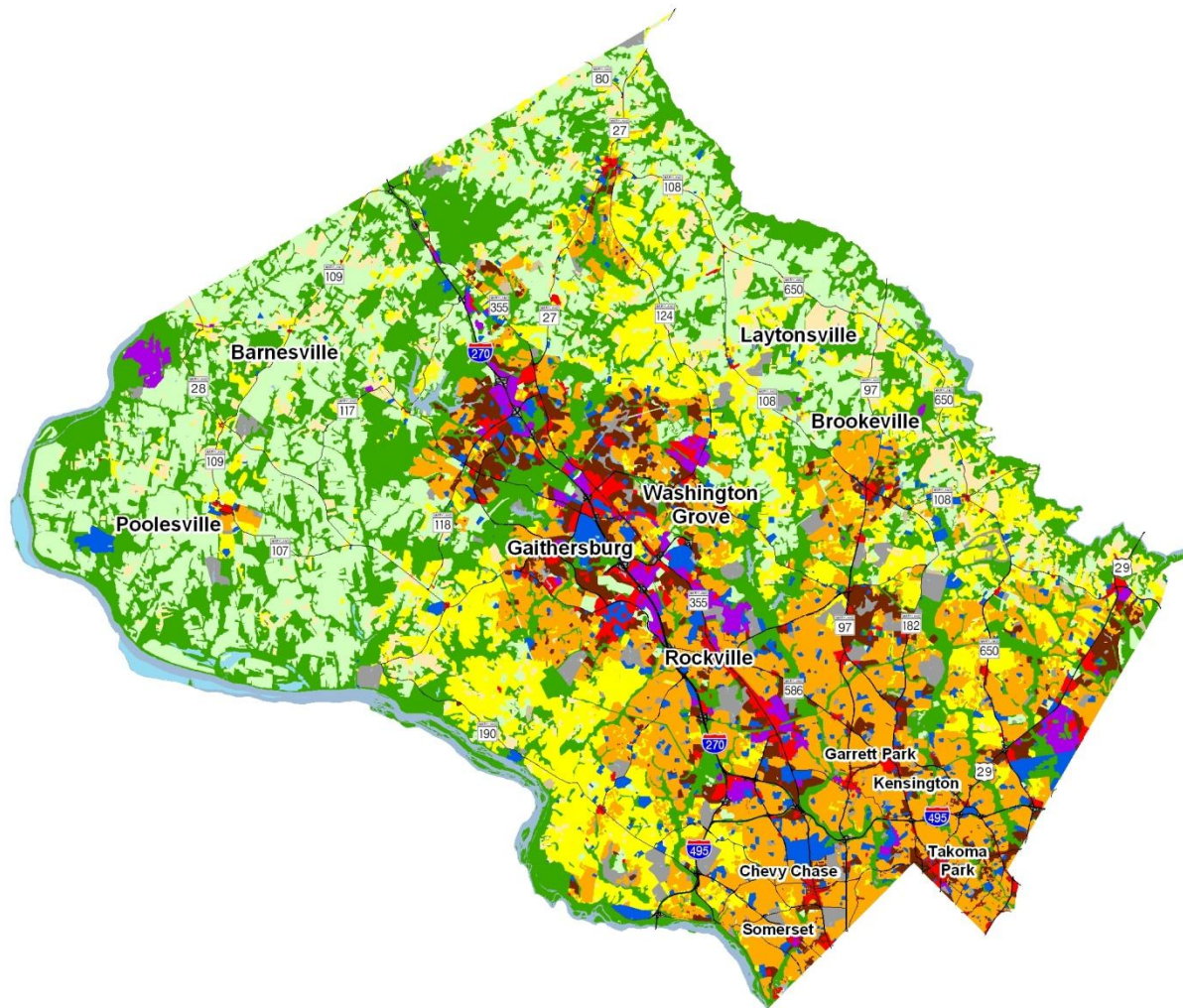
1. Two new categories have been added to the 2010 Land Use/Land Cover layer update; very low density residential development (191,192) and transportation (80).

2. Updates/modifications to the 2010 land use/land cover layers used the 2007 NAIP aerial imagery and parcel information from Maryland Property View 2008.

3. The original 2002 data were mapped using geo-rectified LANDSAT satellite imagery and 2000 MD Property View. In 2010 two new land use categories were added, transportation and very low density residential making it necessary to modify the 2002 land use/land cover layer to incorporate these categories for comparative purposes. Additionally, better imagery and property data information were used to make further modifications. The enhanced 2002 dataset is available upon request.

4. Very low density residential was not mapped in 1973, so there is no data associated with changes. Transportation was not mapped in 1973.

5. As noted above, new land use categories were added in 2010 and associated adjustments were made to 2002 data. Similar adjustments were not made to 1973 data, making it impossible to know how much change from 1973 is due to new development since then, versus misclassified land uses at that time. For these reasons, we suggest reliance only on change statistics for the aggregate land use categories, Total Developed and Total Resource Lands

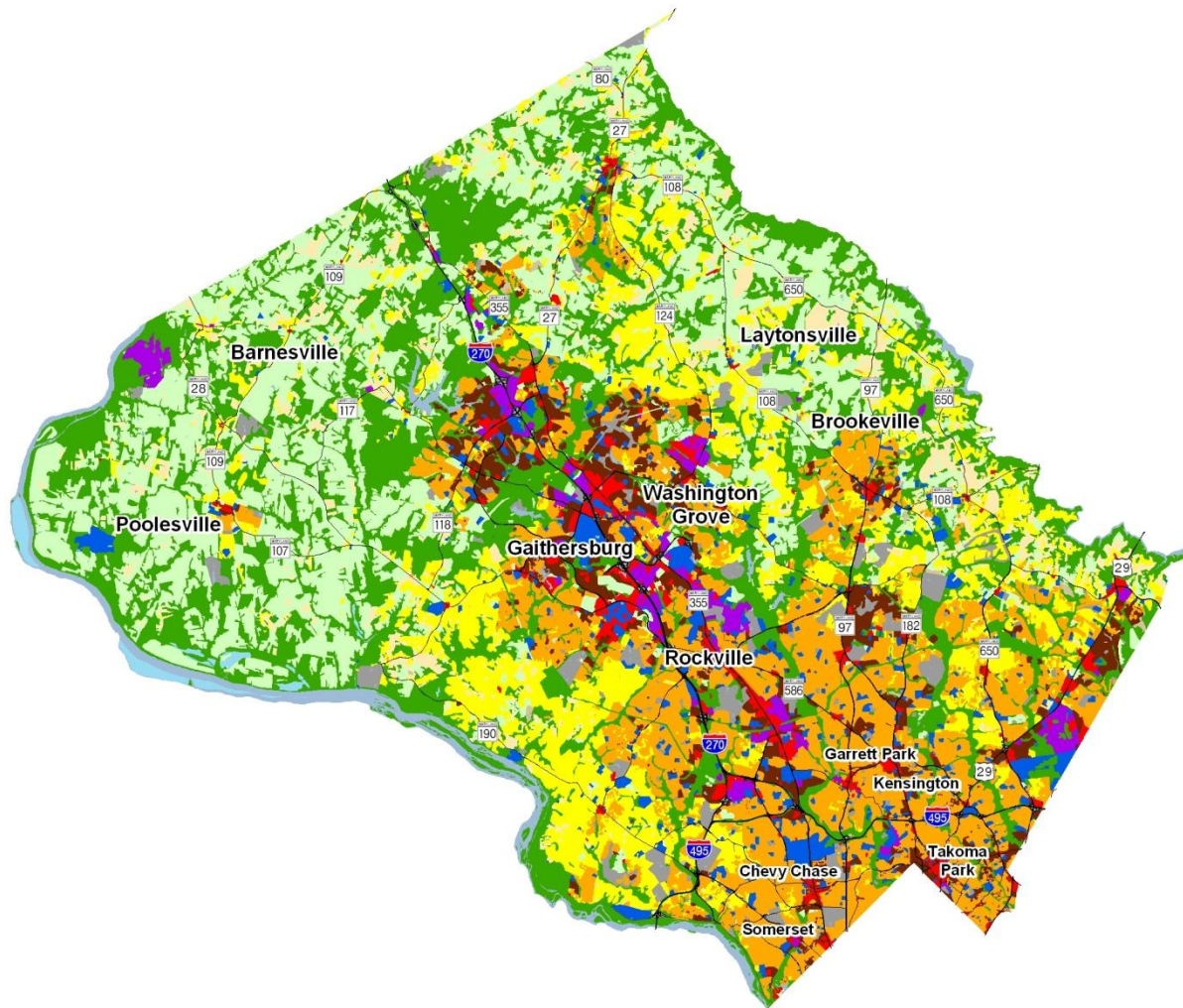


## Montgomery County 2002 Land Use/Land Cover

1) The original 2002 data were mapped using geo-rectified LANDSAT satellite imagery and 2000 MD Property View. In 2010 two new land use categories were added, transportation and very low density residential making it necessary to modify the 2002 land use/land cover layer to incorporate these categories for comparative purposes. Additionally, better imagery and property data information were used to make further modifications. The enhanced 2002 dataset is available upon request.

0 2 4 8 Miles

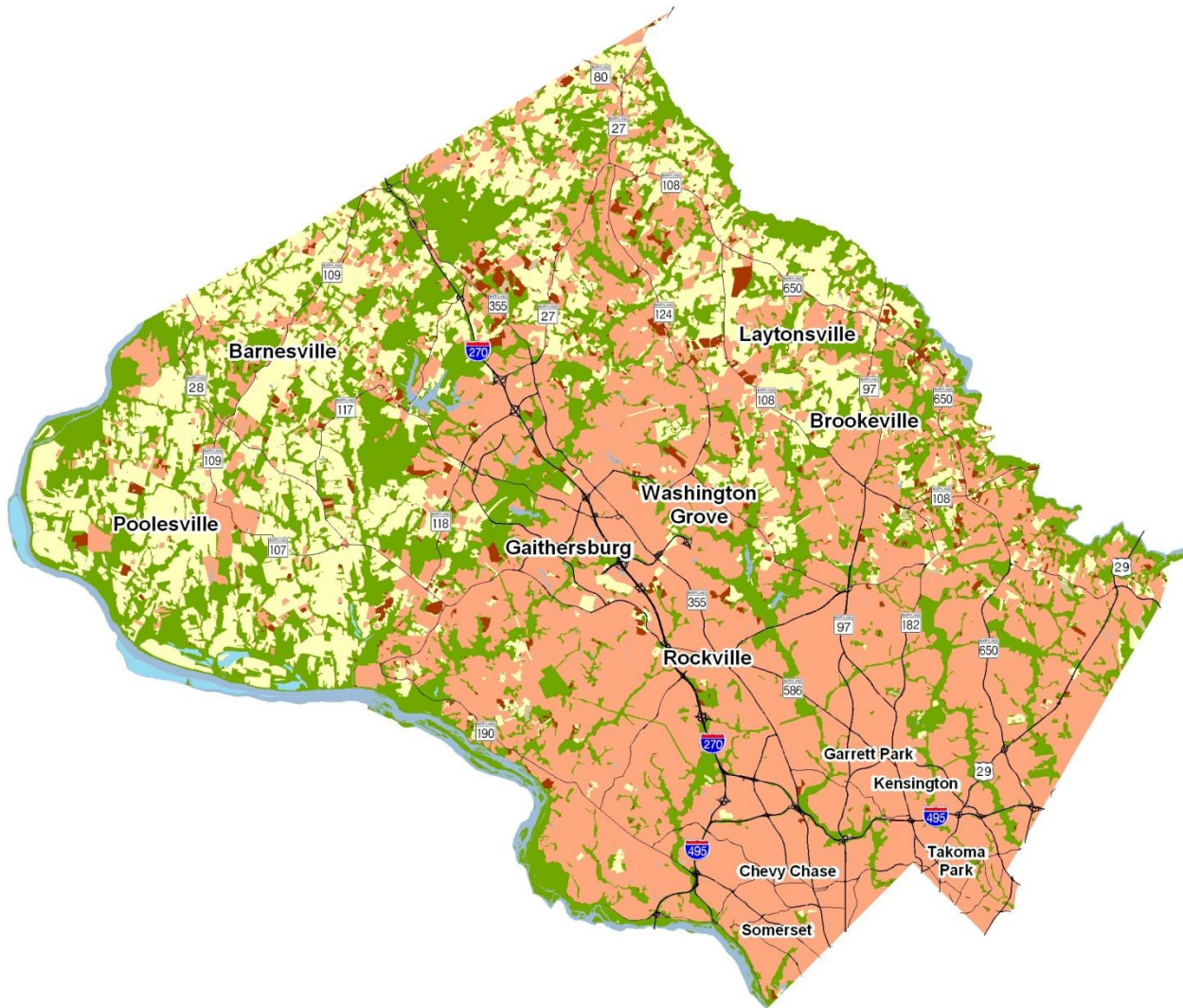




## Montgomery County 2010 Land Use/Land Cover

1) Two new categories have been added to the 2010 Land Use/Land Cover layer update; very low density residential (191,192) and transportation (80).  
 2) Updates/modifications to the 2010 land use/land cover layers used the 2007 NAIP aerial imagery and parcel information from Maryland Property View 2008.





## Montgomery County New Development, 2002-2010

1) Updates/modifications to the 2010 land use/land cover layers used the 2007 NAIP aerial imagery and parcel information from Maryland Property View 2008.

2) The original 2002 data were mapped using geo-rectified LANDSAT satellite imagery and 2000 MD Property View. In 2010 two new land use categories were added, transportation and very low density residential, making it necessary to modify the 2002 land use/land cover layer to incorporate these categories for comparative purposes.

