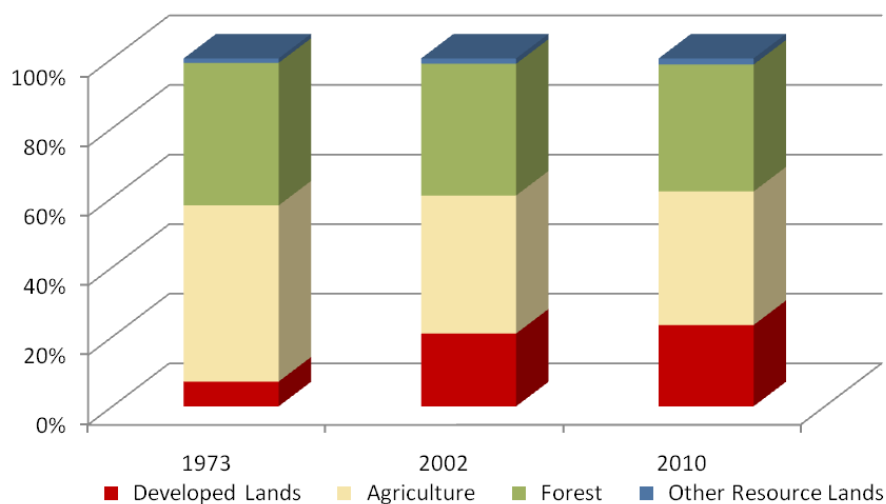


Cecil County

	Land Use in Acres		Land Use Change	
	2002 ³ Acres	2010 ² Acres	2002-2010 Acres	Percent
Very Low Density Residential ¹	12,767	13,987	1,221	9.6%
Low Density Residential	18,991	20,255	1,264	6.7%
Medium Density Residential	4,240	4,891	651	15.4%
High Density Residential	1,149	1,578	429	37.4%
Commercial	2,460	2,983	523	21.2%
Industrial	1,250	1,825	574	45.9%
Other Developed Lands/ Institutional/Transportation ¹	5,809	6,547	738	12.7%
Total Developed Lands⁵	46,666	52,066	5,400	11.6%
Agriculture	88,458	85,625	-2,833	-3.2%
Forest	84,424	81,325	-3,099	-3.7%
Extractive/Barren/Bare	655	955	299	45.7%
Wetland	2,739	2,972	232	8.5%
Total Resource Lands⁵	176,276	170,876	-5,400	-3.1%
Total Land	222,942	222,942		
Water	47,448	47,448		

	Land Use in Acres			Land Use Change
	1973 ⁴	2002 ³	2010 ^{1,2}	1973-2010 Acres
All Residential	10,299	37,146	40,711	30,412
All Non-Residential	5,546	9,519	11,354	5,808
Total Developed Lands⁵	15,845	46,666	52,066	36,220
Total Resource Lands⁵	206,814	176,276	170,876	-35,938
Total Land	222,659	222,942	222,942	
Water	47,730	47,448	47,448	

Land Use Change 1973 - 2010



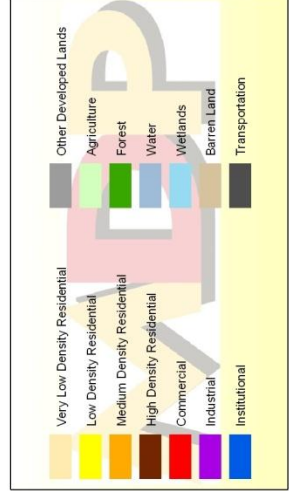
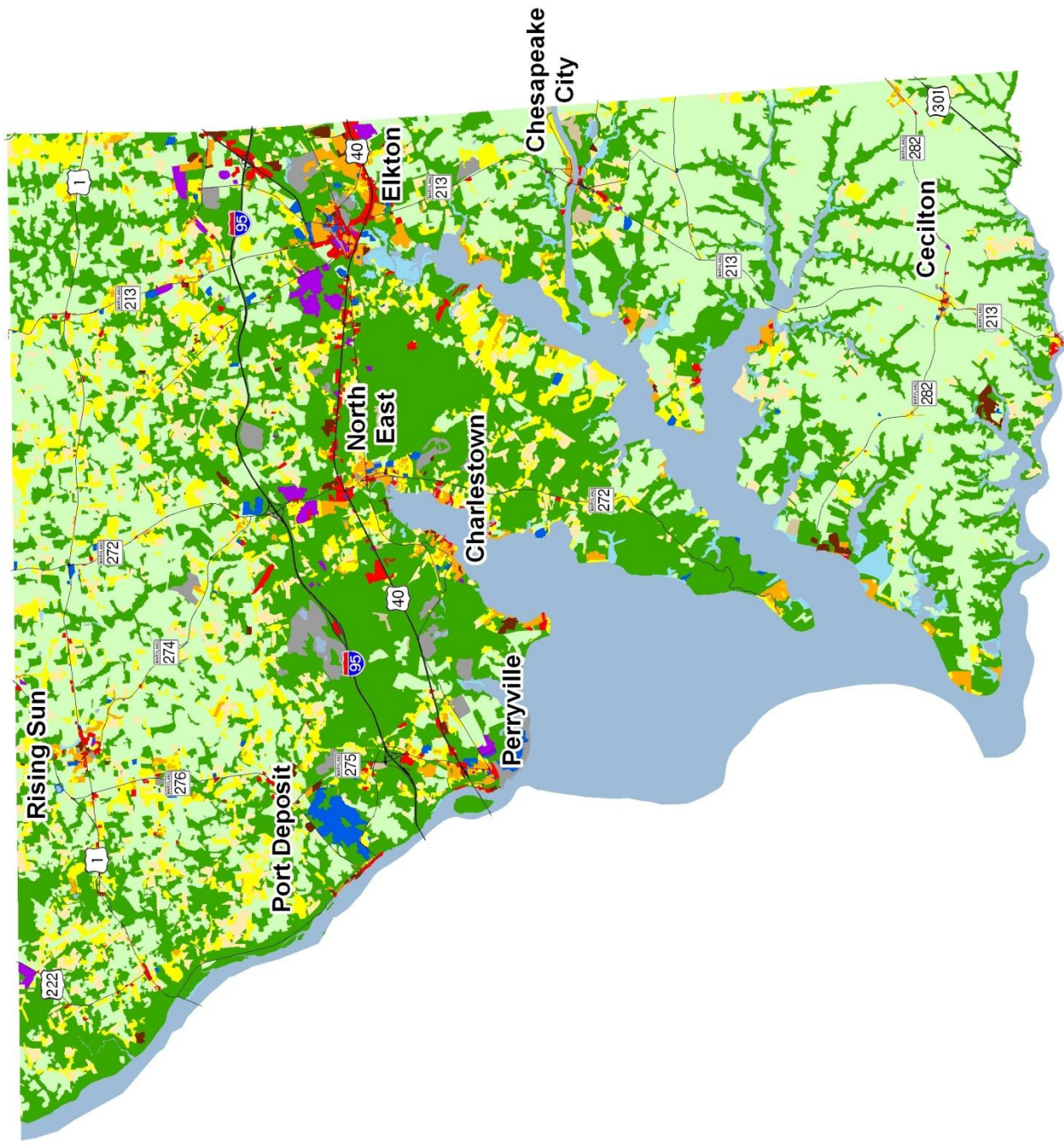
1. Two new categories have been added to the 2010 Land Use/Land Cover layer update; very low density residential development (191,192) and transportation (80).

2. Updates/modifications to the 2010 land use/land cover layers used the 2007 NAIP aerial imagery and parcel information from Maryland Property View 2008.

3. The original 2002 data were mapped using geo-rectified LANDSAT satellite imagery and 2000 MD Property View. In 2010 two new land use categories were added, transportation and very low density residential making it necessary to modify the 2002 land use/land cover layer to incorporate these categories for comparative purposes. Additionally, better imagery and property data information were used to make further modifications. The enhanced 2002 dataset is available upon request.

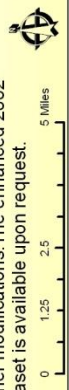
4. Very low density residential was not mapped in 1973, so there is no data associated with changes. Transportation was not mapped in 1973.

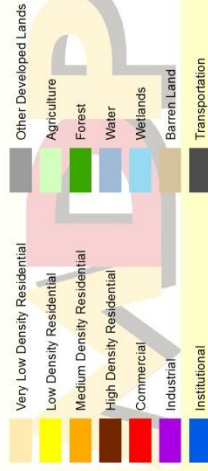
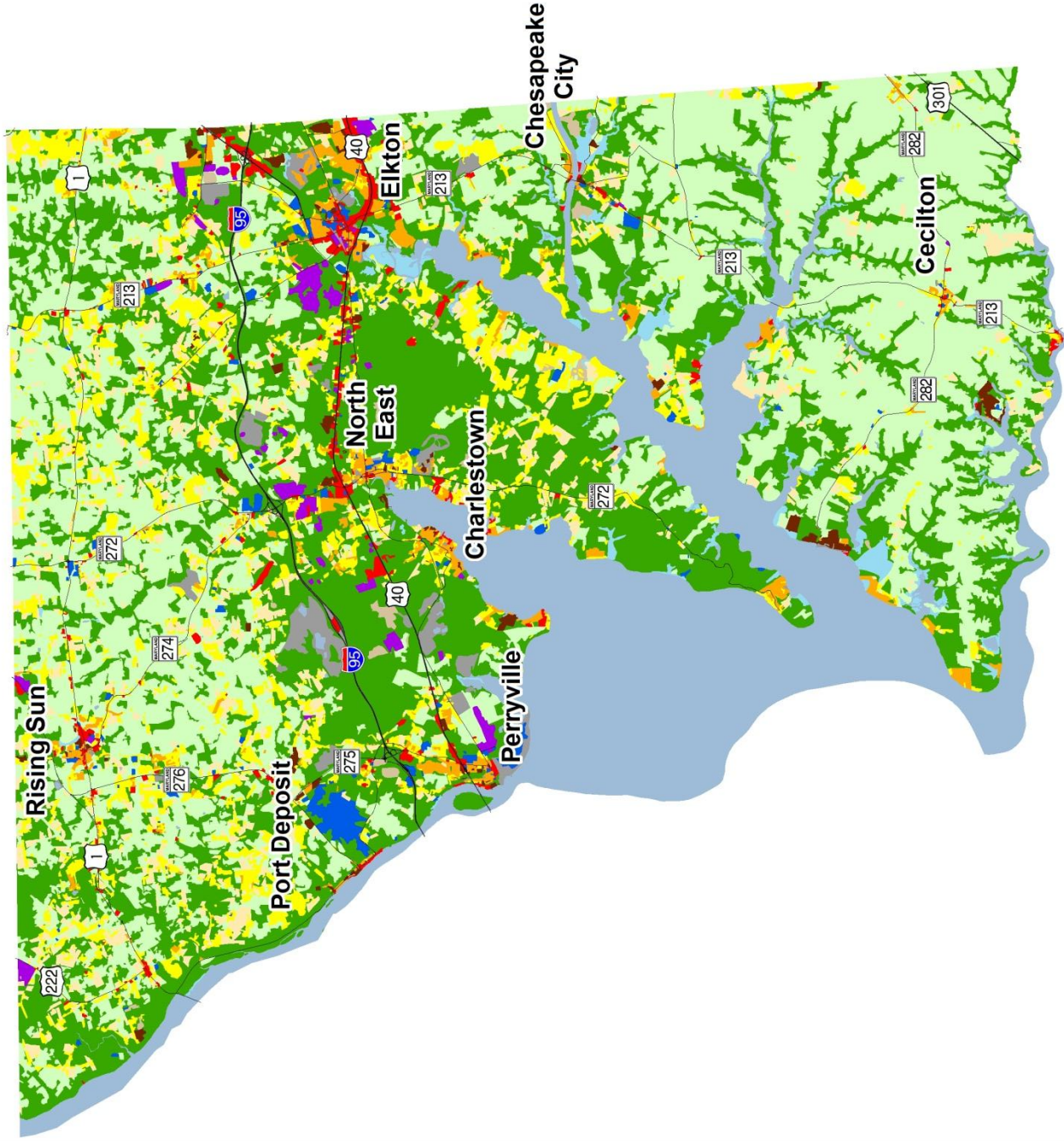
5. As noted above, new land use categories were added in 2010 and associated adjustments were made to 2002 data. Similar adjustments were not made to 1973 data, making it impossible to know how much change from 1973 is due to new development since then, versus misclassified land uses at that time. For these reasons, we suggest reliance only on change statistics for the aggregate land use categories, Total Developed and Total Resource Lands



Cecil County 2002 Land Use/Land Cover

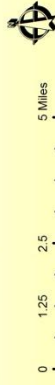
1) The original 2002 data were mapped using geo-rectified LANDSAT satellite imagery and 2000 MD PropertyView. In 2010 two new land use categories were added, transportation and very low density residential making it necessary to modify the 2002 land use/land cover layer to incorporate these categories for comparative purposes. Additionally, better imagery and property data information were used to make further modifications. The enhanced 2002 dataset is available upon request.

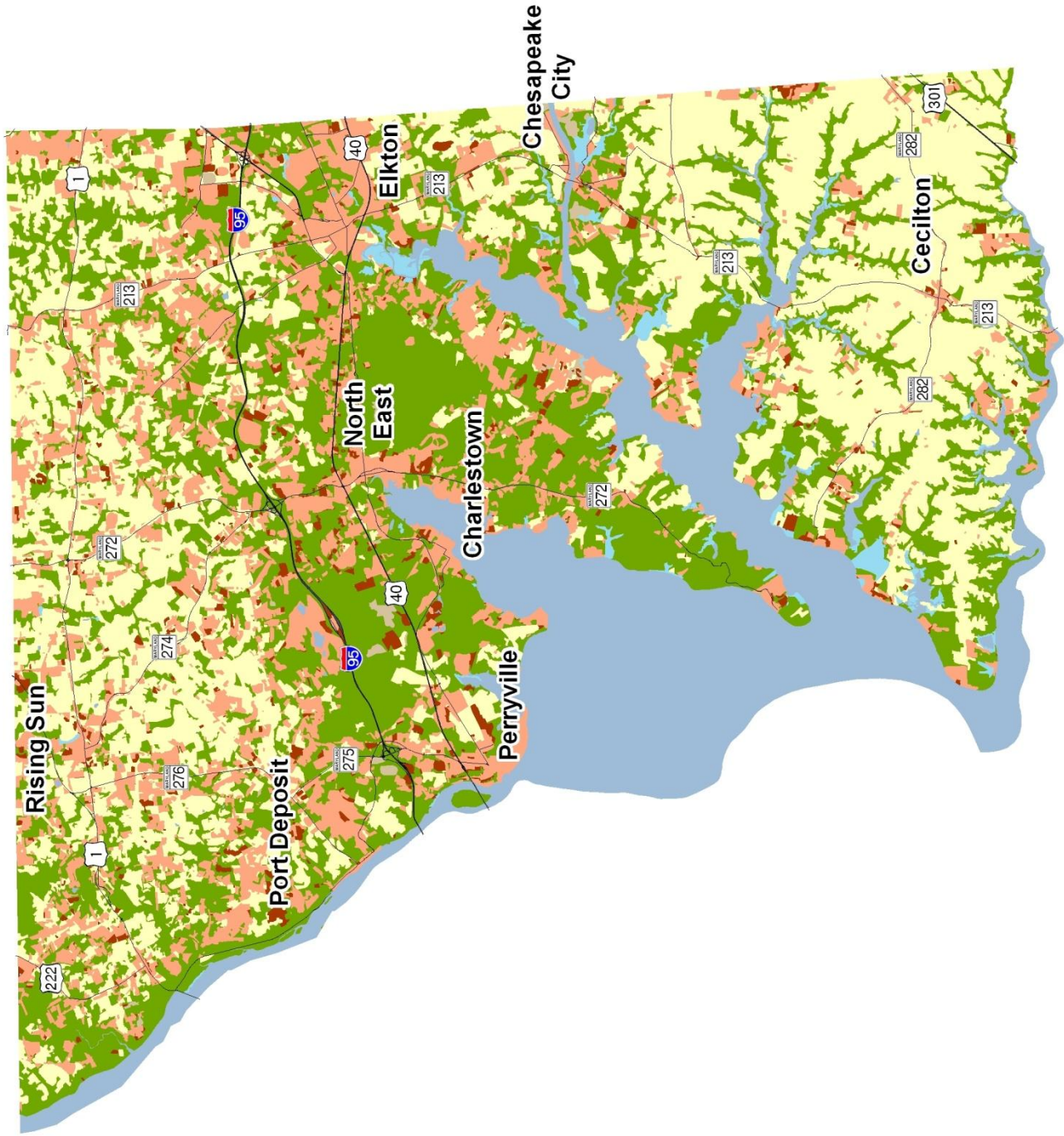




Cecil County 2010 Land Use/Land Cover

- 1) Two new categories have been added to the 2010 Land Use/Land Cover layer update: very low density residential development (191, 192) and transportation (80).
- 2) Updates/modifications to the 2010 land use/land cover layers used the 2007 NAIP aerial imagery and parcel information from Maryland Property View 2008.





Cecil County New Development, 2002-2010

1) Updates/modifications to the 2010 land use/land cover layers used the 2007 NAIP aerial imagery and parcel information from Maryland Property View 2008.
 2) The original 2002 data were mapped using geo-rectified LANDSAT satellite imagery and 2000 MD Property View. In 2010 two new land use categories were added, transportation and very low density residential, making it necessary to modify the 2002 land use/land cover layer to incorporate these categories for comparative purposes.

