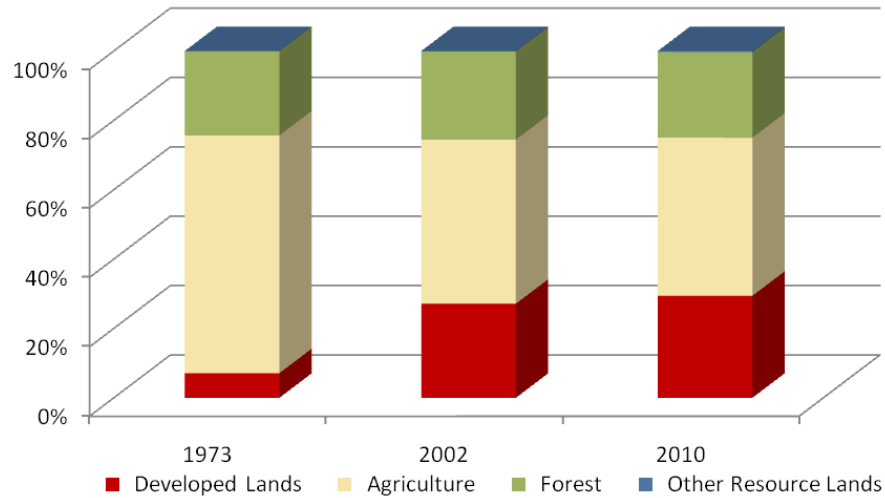


Carroll County

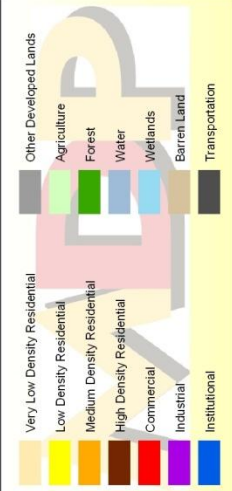
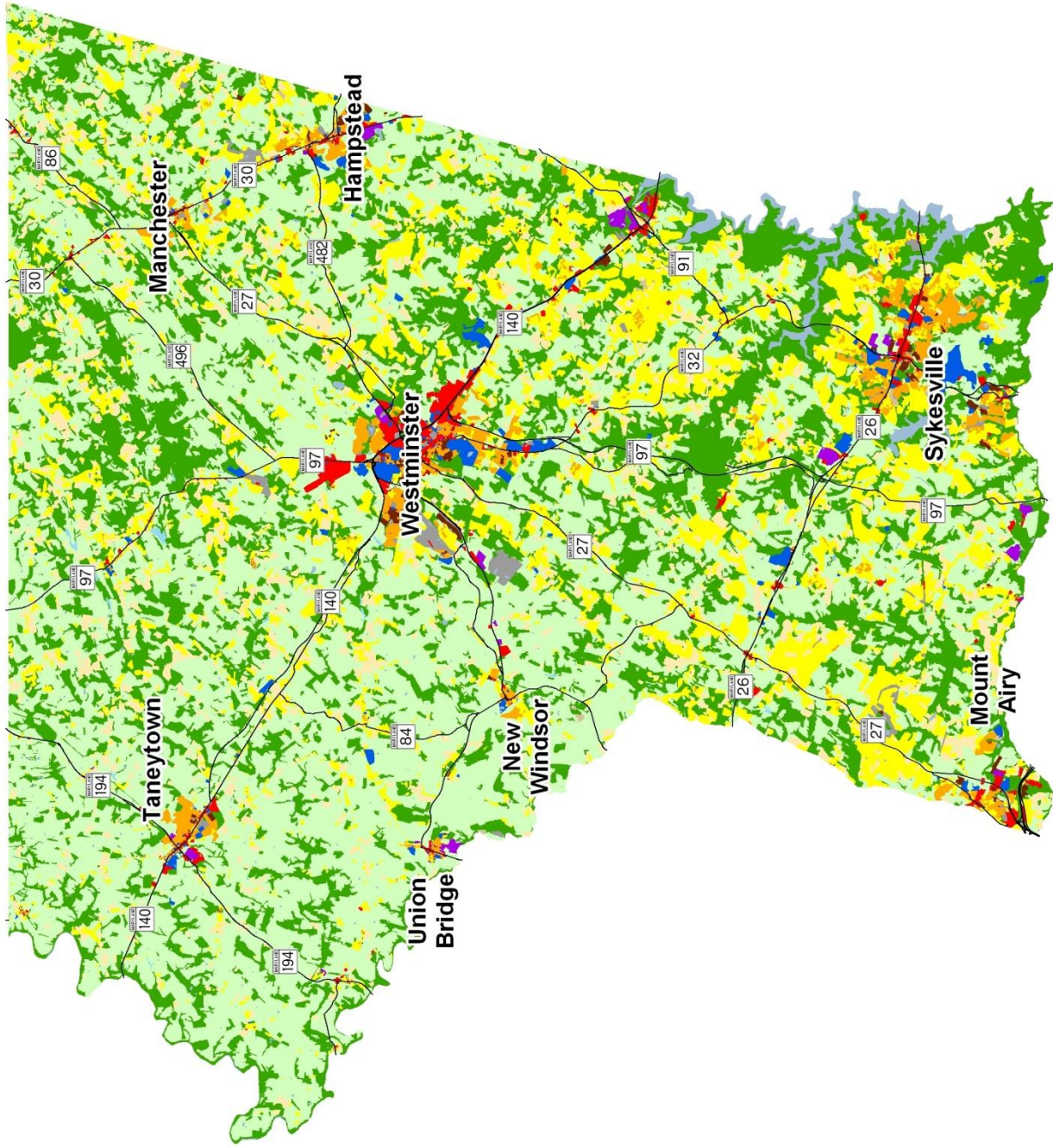
	Land Use in Acres		Land Use Change	
	2002 ³ Acres	2010 ² Acres	2002-2010 Acres	Percent
Very Low Density Residential ¹	21,326	22,816	1,489	7.0%
Low Density Residential	39,691	42,163	2,472	6.2%
Medium Density Residential	6,469	7,073	604	9.3%
High Density Residential	1,023	1,206	183	17.9%
Commercial	3,267	4,005	739	22.6%
Industrial	858	1,512	653	76.1%
Other Developed Lands/ Institutional/Transportation ¹	4,941	5,362	421	8.5%
Total Developed Lands⁵	77,575	84,136	6,561	8.5%
Agriculture	135,462	130,481	-4,981	-3.7%
Forest	72,721	70,793	-1,929	-2.7%
Extractive/Barren/Bare	226	536	310	137.5%
Wetland	202	241	39	19.2%
Total Resource Lands⁵	208,612	202,050	-6,561	-3.1%
Total Land	286,186	286,186		
Water	3,301	3,301		

	Land Use in Acres			Land Use Change
	1973 ⁴	2002 ³	2010 ^{1,2}	1973-2010 Acres
All Residential	16,748	68,509	73,257	56,509
All Non-Residential	3,637	9,066	10,879	7,242
Total Developed Lands⁵	20,385	77,575	84,136	63,751
Total Resource Lands⁵	266,908	208,612	202,050	-64,858
Total Land	287,293	286,186	286,186	
Water	2,195	3,301	3,301	

Land Use Change 1973 - 2010



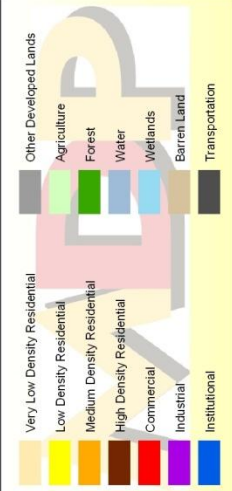
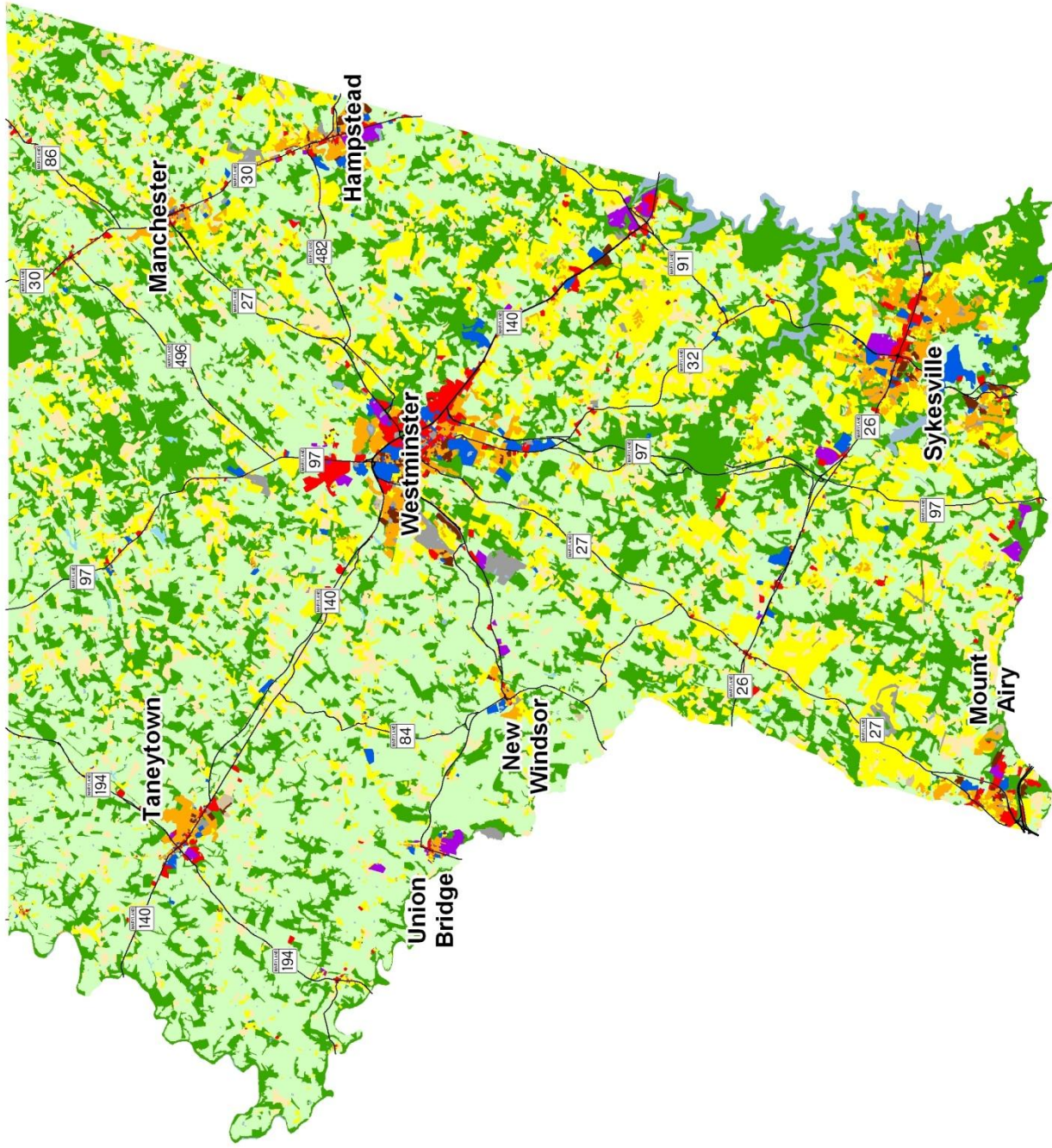
- Two new categories have been added to the 2010 Land Use/Land Cover layer update; very low density residential development (191,192) and transportation (80).
- Updates/modifications to the 2010 land use/land cover layers used the 2007 NAIP aerial imagery and parcel information from Maryland Property View 2008.
- The original 2002 data were mapped using geo-rectified LANDSAT satellite imagery and 2000 MD Property View. In 2010 two new land use categories were added, transportation and very low density residential making it necessary to modify the 2002 land use/land cover layer to incorporate these categories for comparative purposes. Additionally, better imagery and property data information were used to make further modifications. The enhanced 2002 dataset is available upon request.
- Very low density residential was not mapped in 1973, so there is no data associated with changes. Transportation was not mapped in 1973.
- As noted above, new land use categories were added in 2010 and associated adjustments were made to 2002 data. Similar adjustments were not made to 1973 data, making it impossible to know how much change from 1973 is due to new development since then, versus misclassified land uses at that time. For these reasons, we suggest reliance only on change statistics for the aggregate land use categories, Total Developed and Total Resource Lands



Carroll County 2002 Land Use/Land Cover

1) The original 2002 data were mapped using geo-rectified LANDSAT satellite imagery and 2000 MD Property View. In 2010 two new land use categories were added, transportation and very low density residential making it necessary to modify the 2002 land use/land cover layer to incorporate these categories for comparative purposes. Additionally, better imagery and property data information were used to make further modifications. The enhanced 2002 dataset is available upon request.

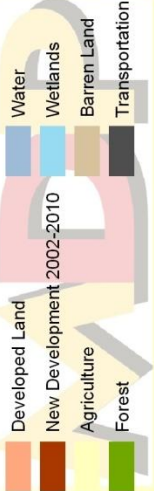
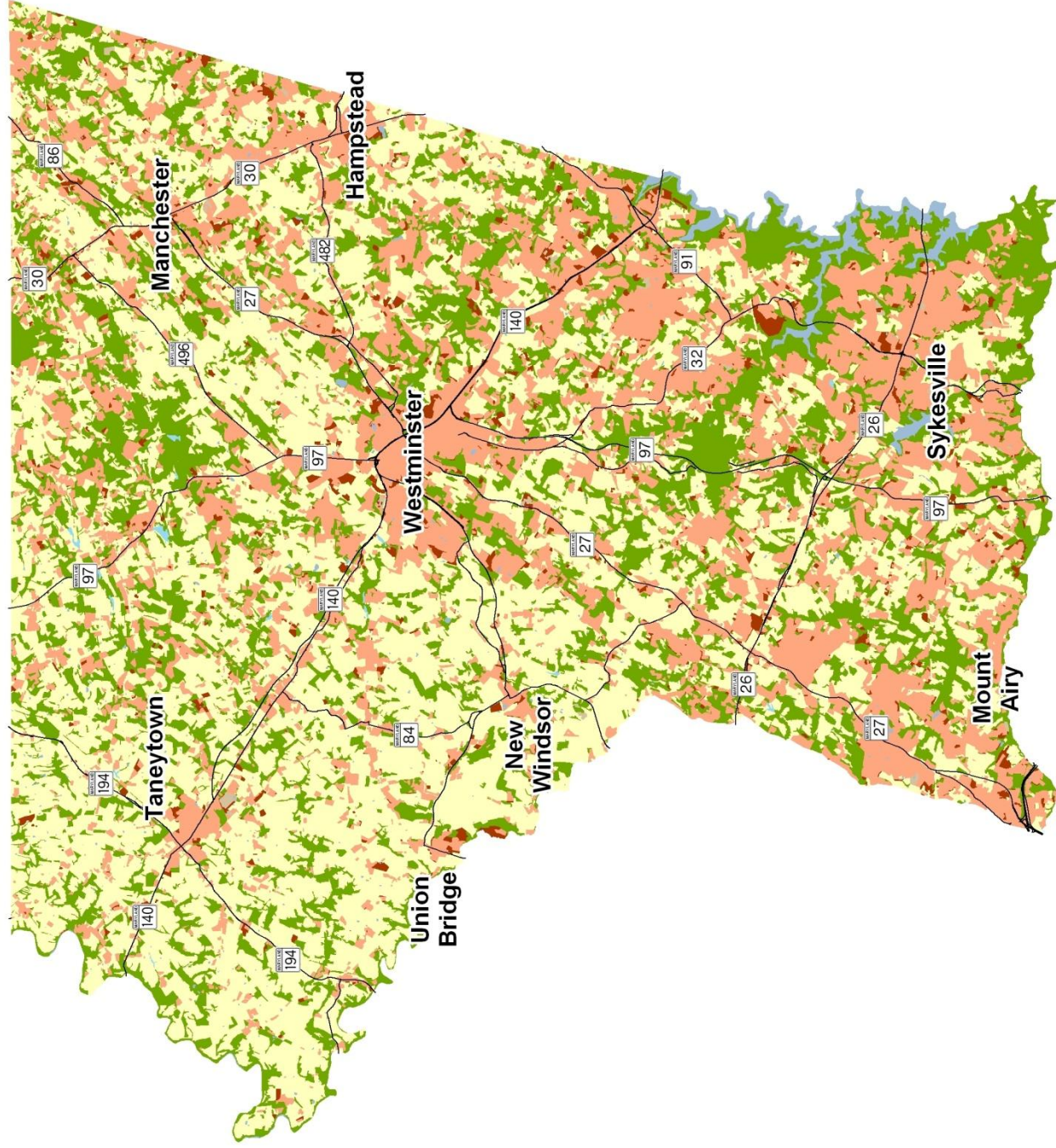




Carroll County 2010 Land Use/Land Cover

1) Two new categories have been added to the 2010 Land Use/Land Cover layer update: very low density residential development (191, 192) and transportation (80).
 2) Updates/modifications to the 2010 land use/land cover layers used the 2007 NAIP aerial imagery and parcel information from Maryland Property View 2008.

0 1.25 2.5 5 Miles



Carroll County New Development, 2002-2010

1) Updates/modifications to the 2010 land use/land cover layers used the 2007 NAIP aerial imagery and parcel information from Maryland Property View 2008.
 2) The original 2002 data were mapped using geo-rectified LANDSAT satellite imagery and 2000 MD Property View. In 2010 two new land use categories were added, transportation and very low density residential, making it necessary to modify the 2002 land use/land cover layer to incorporate these categories for comparative purposes.

