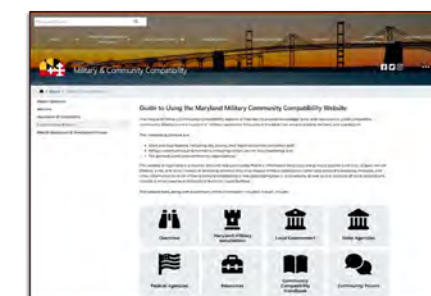
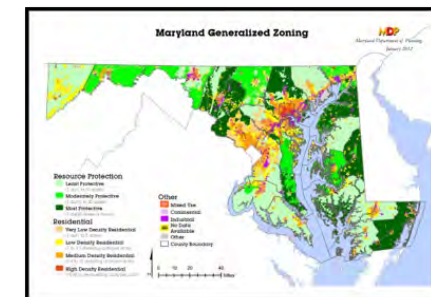


# UPDATES ON PLANNING & OTHER STATE AGENCY INITIATIVES



- Maryland State Freight Plan
- Brownfield Redevelopment Assistance
- 2020 Census and 2016-2020 American Community Survey
- Generalized Zoning
- Statewide Land Use Map
- Compatible Use and Development with Military Installations

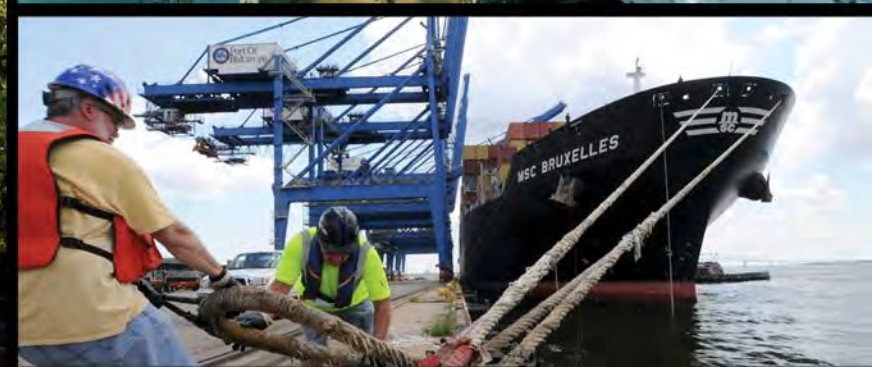


# Maryland State Freight Plan



## Draft Freight Plan Coordination and Update

Planning Directors' Roundtable / April 28, 2022



# Freight Plan Overview

## PURPOSE

To examine existing and projected conditions, build consensus, and identify policy positions, strategies, and freight projects to improve freight movement efficiency and safety

## VISION

Freight travels freely and safely through a modern, resilient, and interconnected multimodal network contributing to sustainable economic viability and growth for Maryland businesses and communities.

## GOALS

*aligned w/ the 2040 Maryland Transportation Plan (MTP)*



SAFETY, SECURITY, AND RESILIENCE



ECONOMIC OPPORTUNITY AND EFFICIENCY



SYSTEM PRESERVATION AND MODERNIZATION



QUALITY OF SERVICE, EFFICIENCY, AND CUSTOMER EXPERIENCE



ENVIRONMENTAL PROTECTION AND SENSITIVITY



FISCAL RESPONSIBILITY



TRANSPORTATION CHOICES AND CONNECTIONS

The **Infrastructure Investment and Jobs Act (IIJA)** identifies **17 federally required elements** for a state freight plan, including 7 new elements (compared to FAST Act) related to: truck parking, supply chains, ports, multi-state compacts, e-commerce, military freight, and resilience and environmental impacts.

# Highlights of Freight Plan Needs

## Freight needs and focus areas were informed by:

- Stakeholder Outreach
- Background Research
- Existing Plans/Programs
- Performance Data
- Federal Requirements

### **Regional Needs Maps**

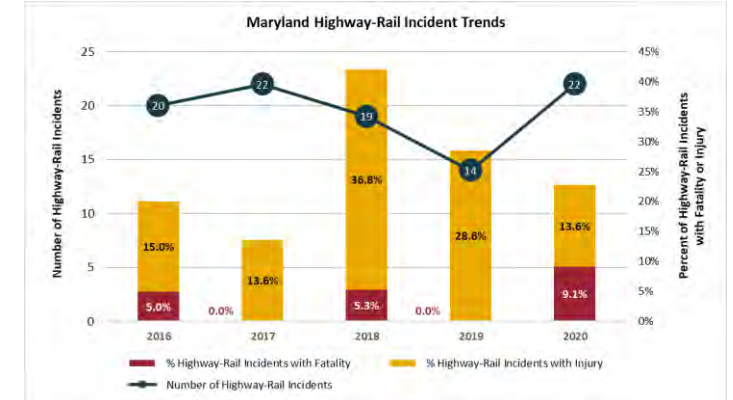
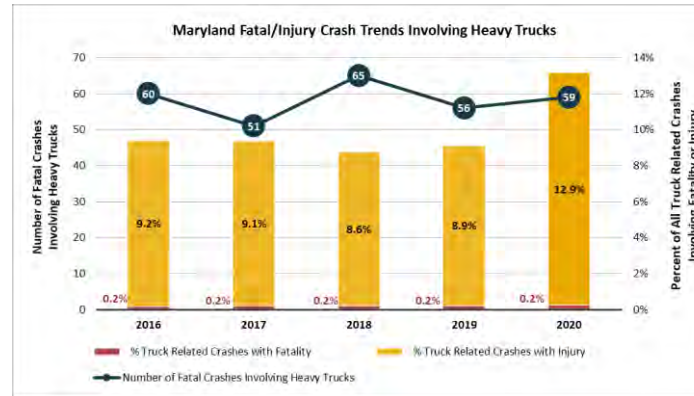
*Details will be included with Section 5 of the Freight Plan based on truck parking needs, congested routes/areas, truck bottlenecks, and related content shared during Milestone #2.*



# Freight Focus Areas

## 1. Safety/Security

- Truck crashes
- Highway-rail crossings
- Hazardous materials
- Cybersecurity



## 2. Technology & Operations

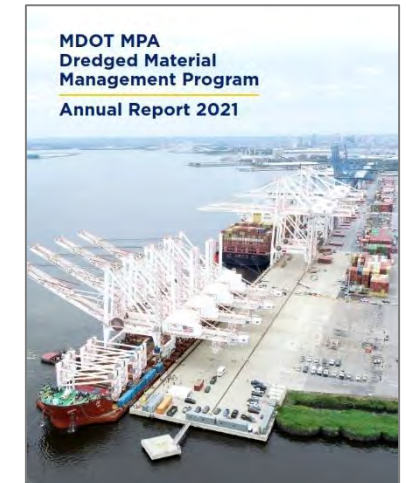
- TSMO, CHART, ITS
- Permitting & monitoring
- CAV, ADAS, truck platooning
- PDD, UAV, modeling/analytics



## 3. Asset Management

- Bridge conditions
- Pavement conditions
- Dredging
- Incident management

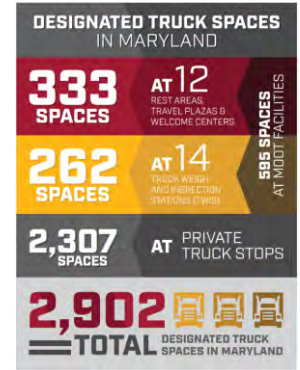
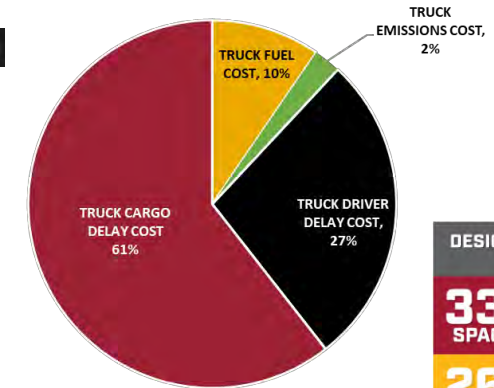
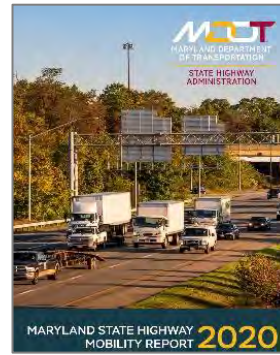
CALENDAR YEAR	2012	2013	2014	2015	2016	2017	2018	2019	2020	2021
Number of MDTA Bridges in Poor Condition	4	1	1	1	1	1	1	1	1	0
Number of MDOT Sha Bridges in Poor Condition	97	87	81	69	69	67	62	52	36	29
Total Number of Bridges in Poor Condition	101	88	82	70	70	68	63	53	37	29
Percent of Bridges in Poor Conditions	3.5%	3.0%	2.8%	2.4%	2.4%	2.4%	2.2%	1.8%	1.3%	1.0%



# Freight Focus Areas

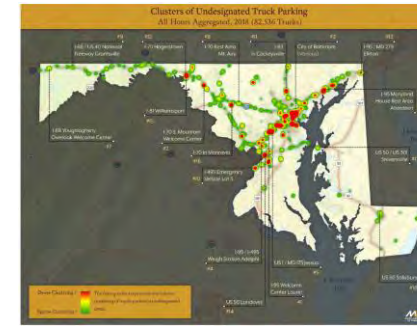
## 4. Congestion

- Truck volumes
- Truck bottlenecks
- Truck reliability
- Multimodal reliability



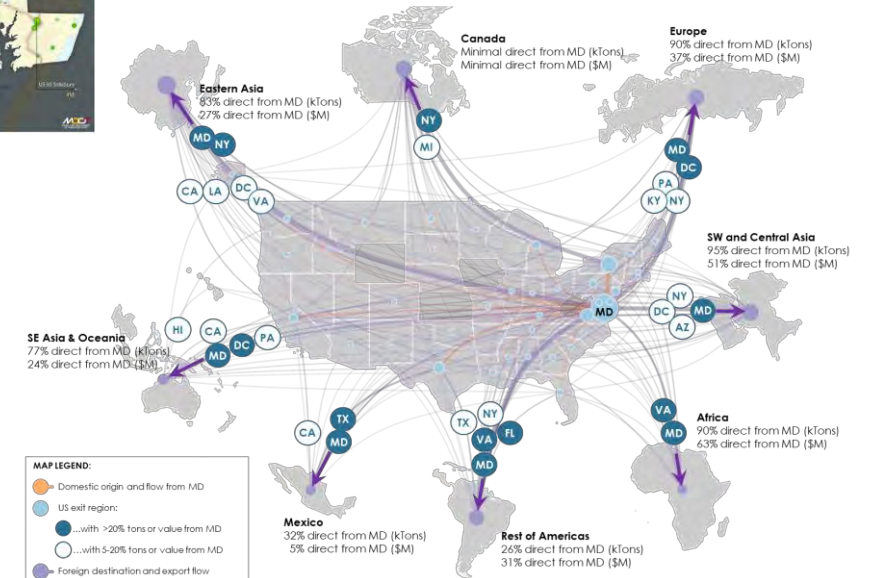
## 5. Truck Parking

- Designated truck parking
- Undesignated truck parking
- Challenges and opportunities



## 6. Supply Chains

- Cargo flows and key industries
- Multimodal opportunities
- Freight land use
- Freight workforce

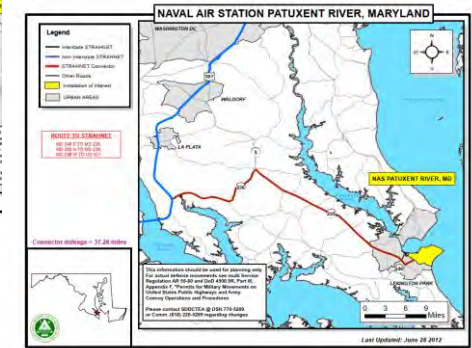
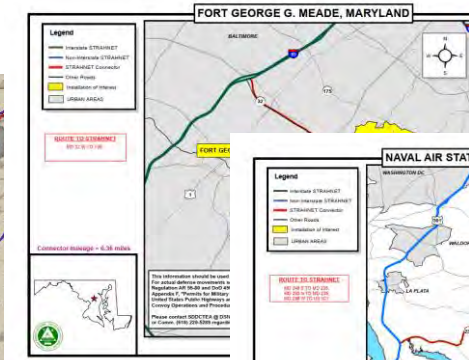




# Freight Focus Areas

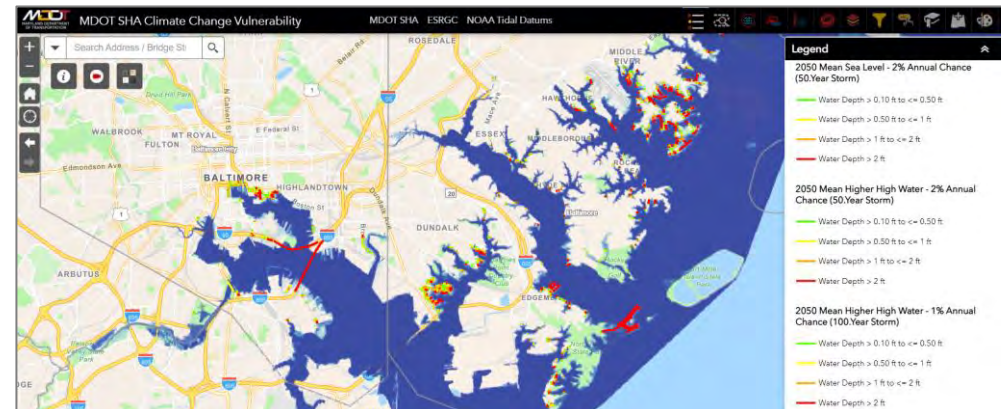
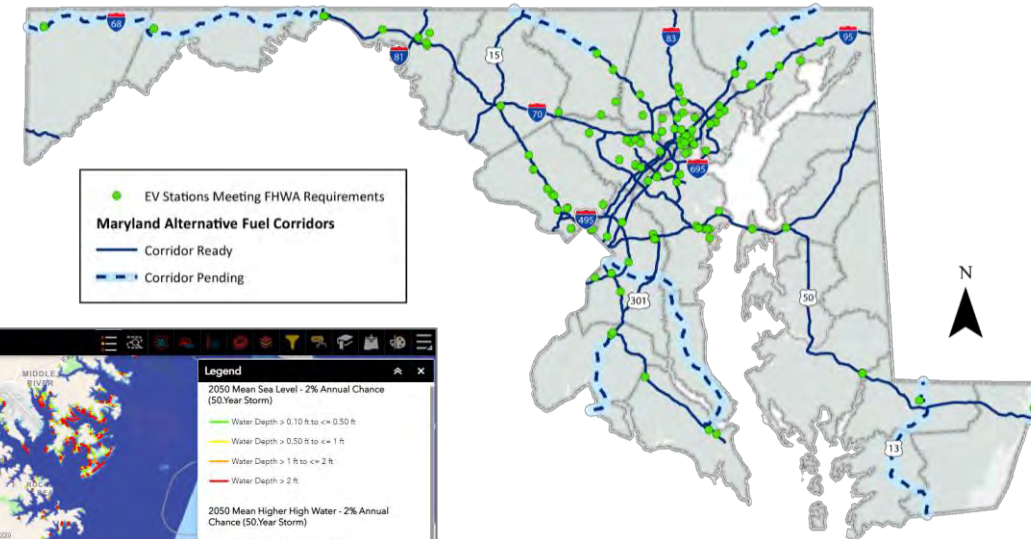
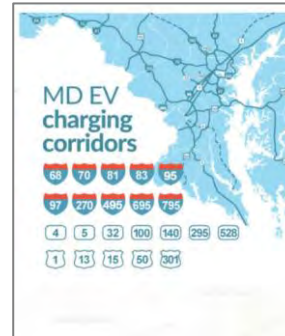
## 10. Military Freight

- Maryland military installations
- Strategic defense networks
- Freight project/program influences



## 11. Resilience & Environmental

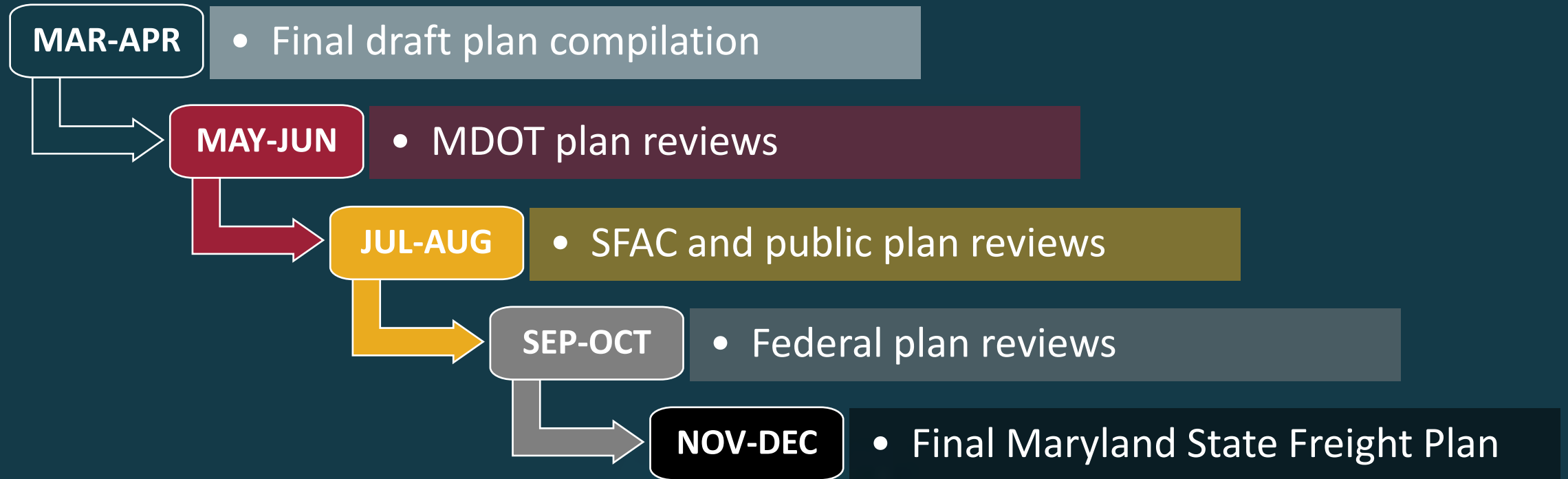
- Climate change vulnerabilities
- Emergency freight access
- Alternative & efficient energy
- Community considerations







# Plan Completion Schedule



# Discussion Questions

1. Are there other **freight focus areas** relevant to ongoing freight needs and programs in Maryland?
2. Are there other **implementation priorities** relevant to continuing Maryland freight planning and coordination?

For more information, please contact us at the following:

## Project Websites:

State Freight Plan: <https://mdot.maryland.gov/freightplan>

State Rail Plan: <https://www.mdot.maryland.gov/railplan>

## Project Email:

[MDStateFreightPlan@mdot.maryland.gov](mailto:MDStateFreightPlan@mdot.maryland.gov)



# Thank You!



# BROWNFIELD REDEVELOPMENT ASSISTANCE

- Stay tuned for 3-4 webinars this spring on topics such as EPA grant writing assistance, additional EPA funds, and environmental due diligence for ensuring eligibility for EPA funds.
- 2022 Maryland brownfields conference
- Implementation of EPA grant for Baltimore County East Side



# CENSUS AND SDC UPDATES

- 2020 Census
- Population Estimates Program
- American Community Survey
- Census Geography
- Economic Programs



# 2020 CENSUS

## WHAT INFORMATION IS AVAILABLE... NOW, LATER

- Now - published August 12<sup>th</sup>: **Redistricting Data File (Sep. 16<sup>th</sup>)**
  - Adult (18+), child, and total populations
  - Major race groups and combinations (multi-racial)
  - Total households, total housing units
  - *Almost* any geography you would want
  - Group Quarters Population
- Later - May 2023: **Demographic & Housing Characteristics (DHC)**
  - The remaining characteristics:
    - *Detailed age,*
    - *race,*
    - *sex,*
    - *Tenure (rent or own home),*
    - *family (or nonfamily) and relationships among people living together*

# POPULATION ESTIMATES PROGRAM

## WHAT INFORMATION IS AVAILABLE... NOW, LATER

- Now - published March: **2021 Estimates for Maryland Jurisdictions**
  - Total Resident Population
  - Natural Increase (Births, Deaths)
  - Net Migration (International, Domestic)
- Later - May: **2021 Estimates by Incorporated Place**  
June: **2021 Estimates for States and Counties by**
  - Age
  - race
  - sex
  - Hispanic Origin



# AMERICAN COMMUNITY SURVEY

## WHAT INFORMATION IS AVAILABLE... NOW, LATER

- Now - published March 17<sup>th</sup>: **2016-2020 ACS 5-year Estimates**
  - Demographic and Comparison Profiles:
    - *Available for all Census geographies except the census blocks and block groups*
    - *Show population, housing, economic and social characteristics*
  - Maryland Legislative Districts Handbook
    - *Selected Demographic, Socio-Economic, and Housing Characteristics*
    - *Thematic Maps based on 2012 Legislative District Boundaries*
- Later - **ACS 2015-2019 Migration Data**
  - *Shows migration flows (in-, out-, and net) among and within regions*
  - *Shows migrations flows among the 23 counties and Baltimore City*



# GEOGRAPHIC PROGRAMS



## WHAT INFORMATION IS AVAILABLE... NOW, LATER

- Now - published 2020: **Census 2020 Geographies**
  - Boundary Tiger Shapefiles and Maps
    - *Shapefiles available for each geography in Maryland (county, place, tract, block group and block)*
    - *Maps showing census tracts for each county as well as block groups*
- Later- Summer 2023: **Count Question Resolution (CQR)**
  - If local governments identify errors in Census 2020 boundaries and/or housing unit counts, request Census to review processing errors in the Census 2020 count.
  - Corrected counts would be used as baseline for the Population Estimates Program
    - *Corrected counts/boundaries would help governments plan and apply for future federal funding*
    - *Corrections will not change apportionment counts or redistricting data*



# ECONOMIC PROGRAMS

## WHAT INFORMATION IS AVAILABLE... NOW, LATER

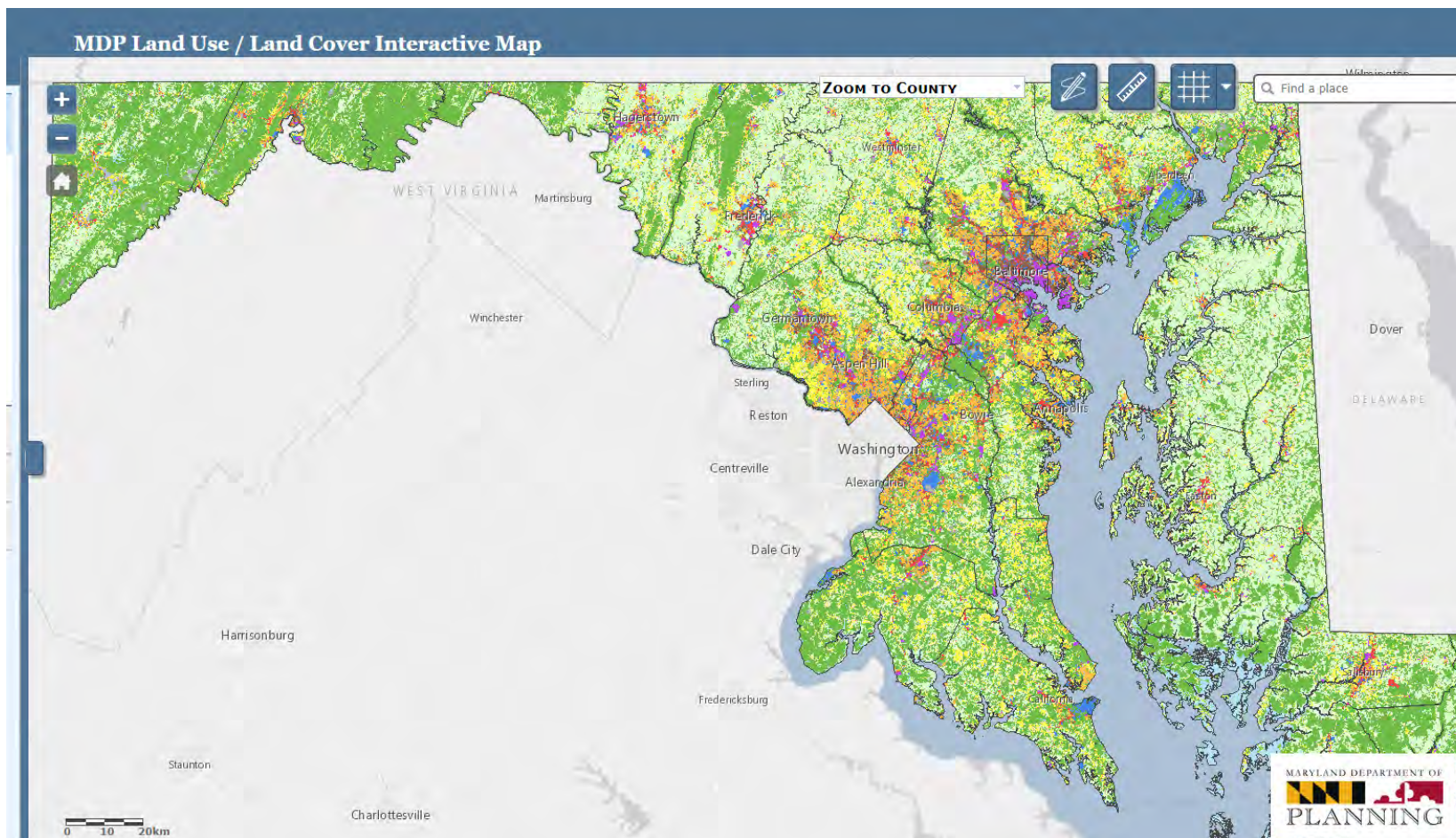
- Now - published March: **2020 Bureau of Economic Analysis**
  - Income and Employment Estimates by County and Region
- Later - April/May: **2019 County Business Patterns**
  - Count of Private-Sector Establishments and Employment by County/ Zip codes
- Later - **2021 Small Area Income and Poverty Estimates (SAIPE)**
  - Annual estimate of the median household income by County
  - Annual estimate of poverty and poverty rate by County



# GENERALIZED ZONING UPDATES

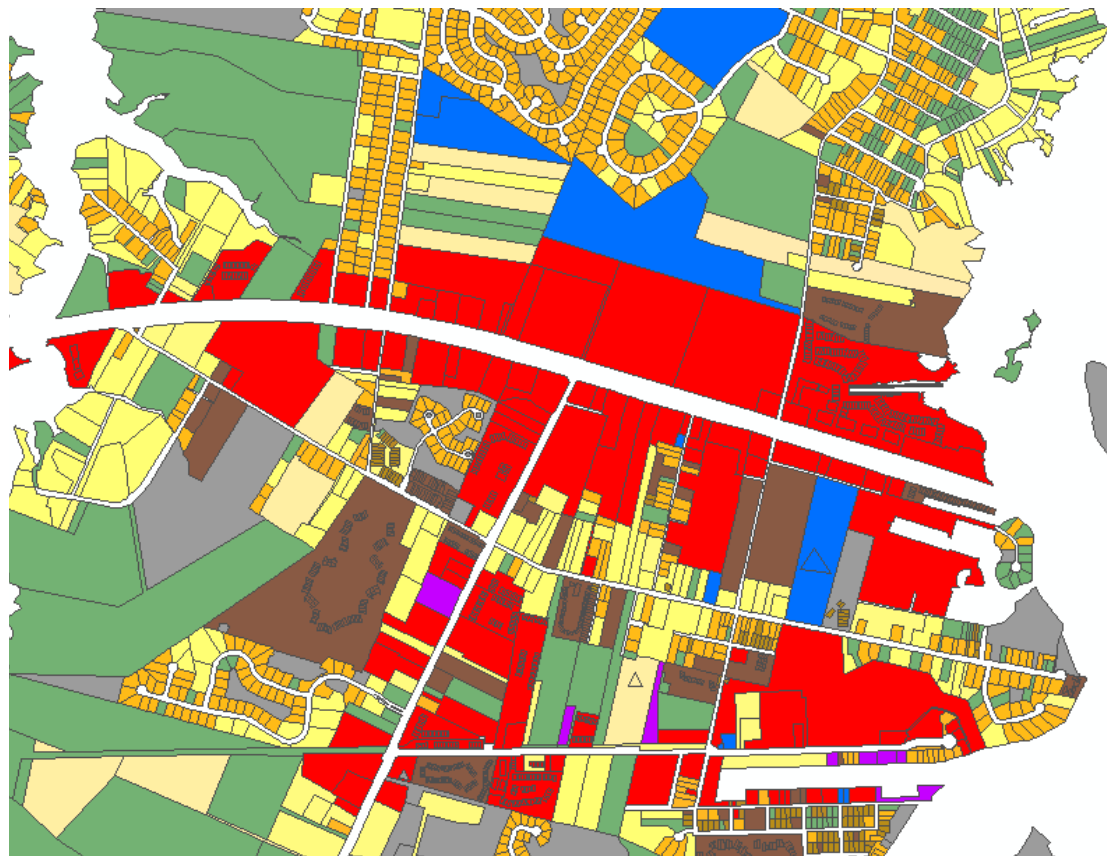
- An online Generalized Zoning Map application will be going out for review in a few weeks
  - A simple review with a quick turn-around.
  - New data will also be accepted for updates.
- For more information, please contact Shelly Aprill at [Shelly.Aprill@Maryland.gov](mailto:Shelly.Aprill@Maryland.gov)

# STATEWIDE LAND USE MAP UPDATE

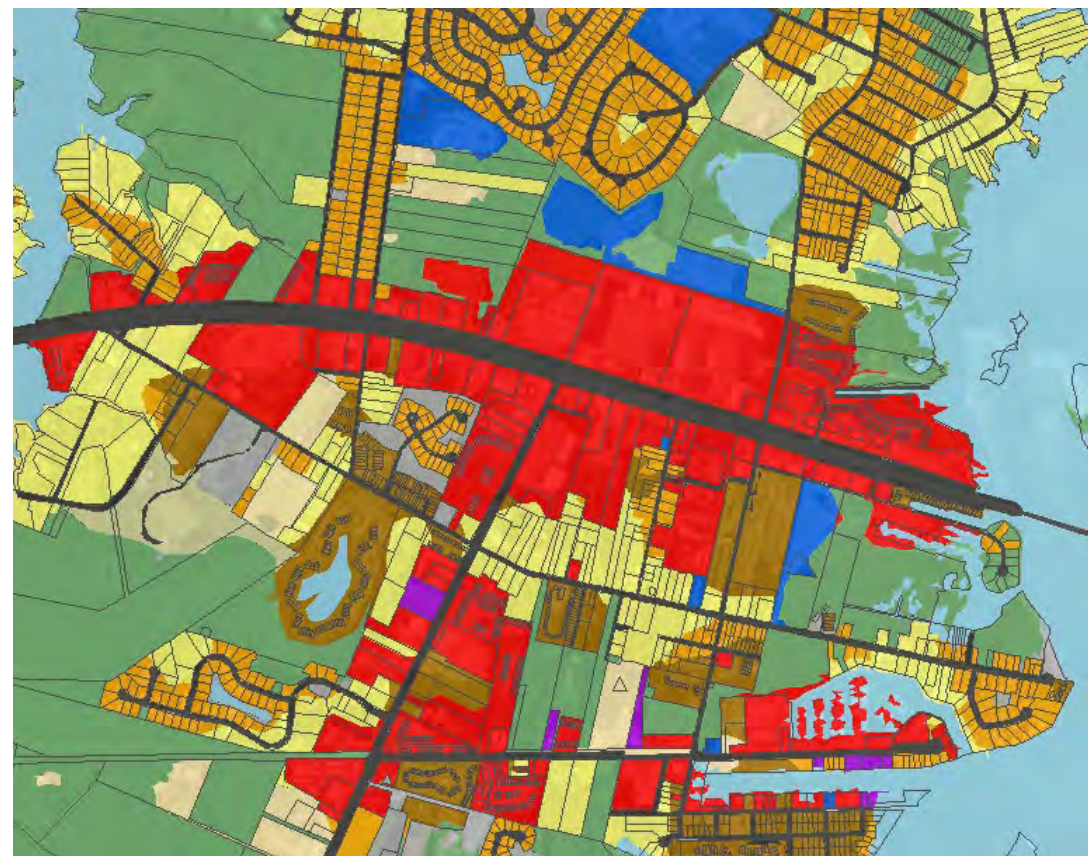


<https://planning.maryland.gov/Pages/OurWork/Land-Use/2020-land-use-map-update.aspx>

# 2020 METHODOLOGY STEPS

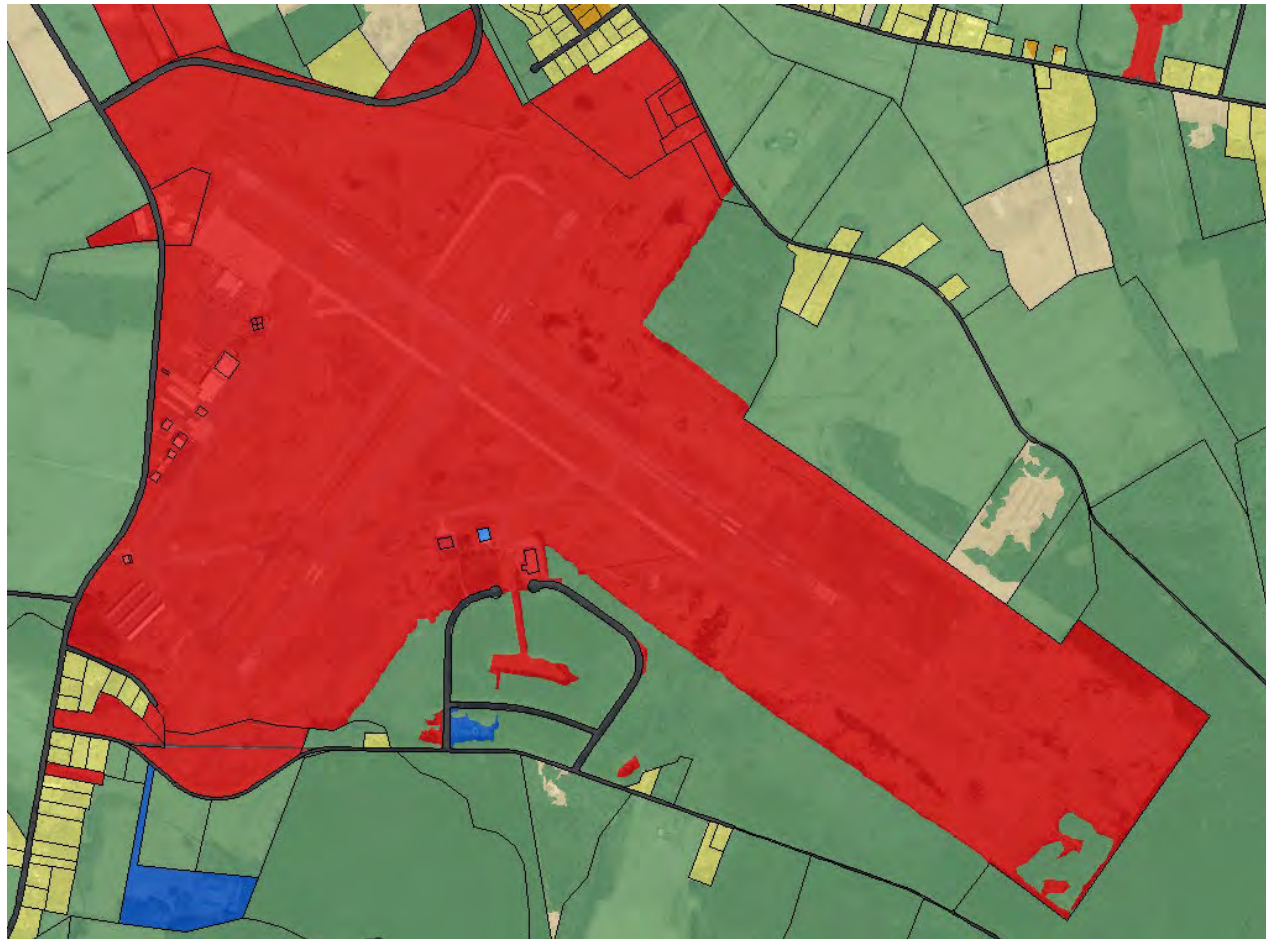


Step 1: Parcel Classification



Step 2: Statewide Rules for Developed Extent

\*Images show hypothetical example. Actual land uses may differ



\*Images show hypothetical example. Actual land uses may differ

# STATEWIDE LAND USE MAP UPDATE

- Draft outputs for six test counties under internal review
- Two review processes:
  - Classified parcels
  - Statewide rules
- Please contact Deborah Sward at [deborah.sward@maryland.gov](mailto:deborah.sward@maryland.gov) if interested in participating in one or both processes by 5/13
- Planning will follow up with jurisdictions regarding review schedule

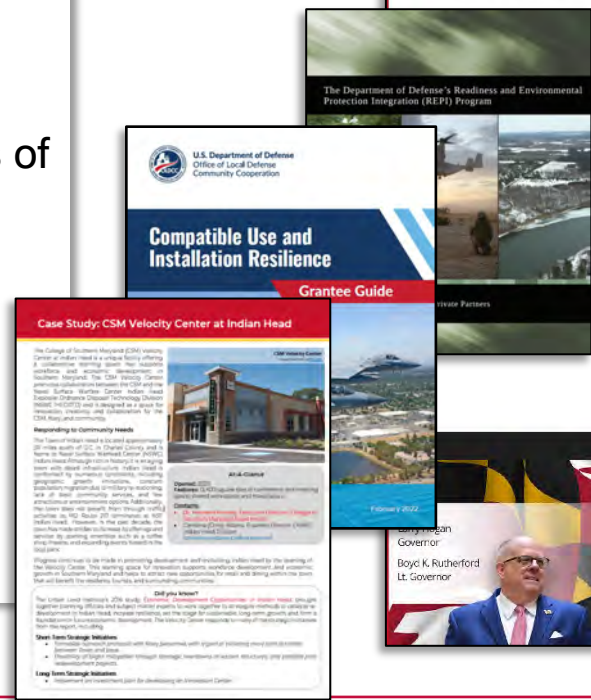
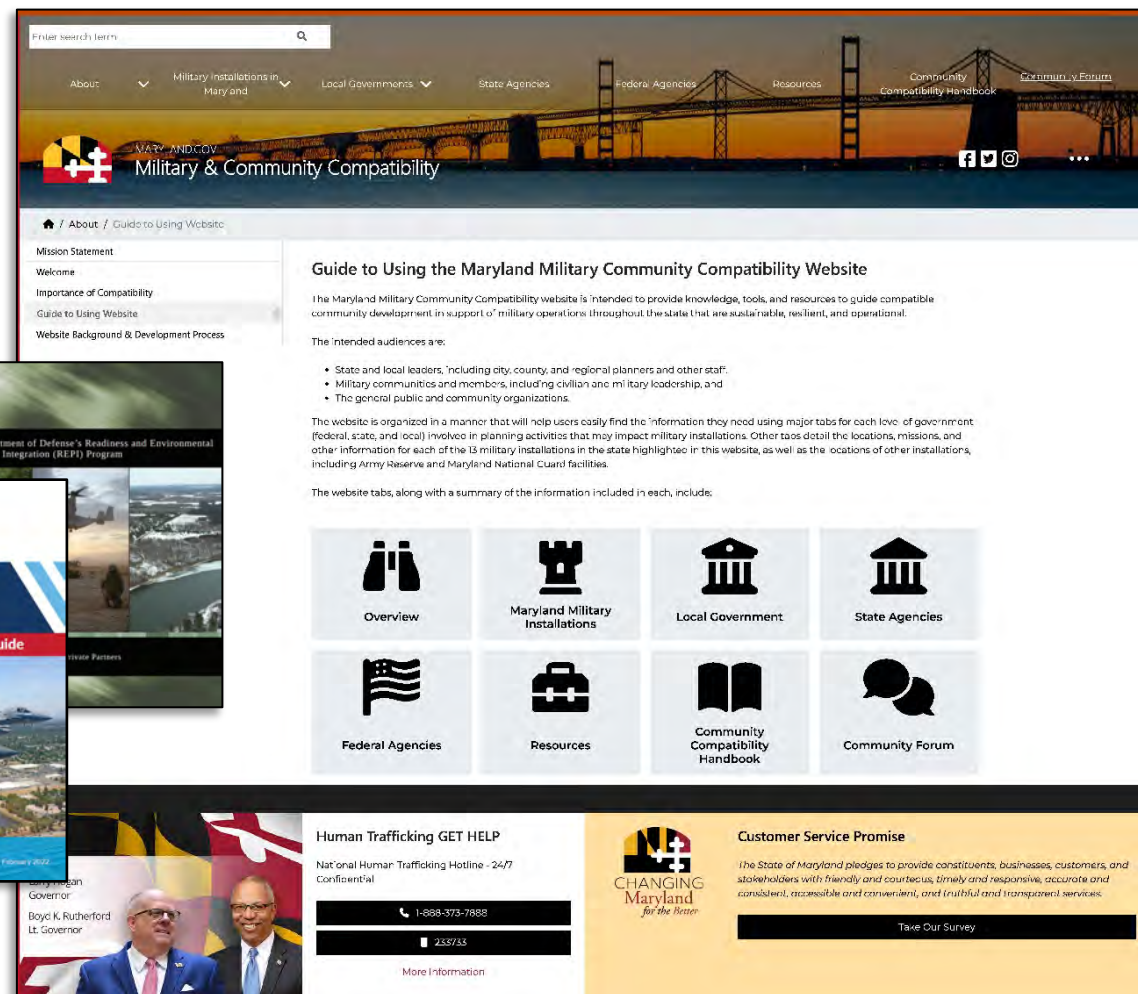
# COMPATIBLE USE WEBSITE & HANDBOOK DEVELOPMENT UPDATE

## Purpose

- Illustrate economic impact of the military in MD and build community engagement.
- Provide communities with tools and resources to ensure compatible use.

## Resource Examples

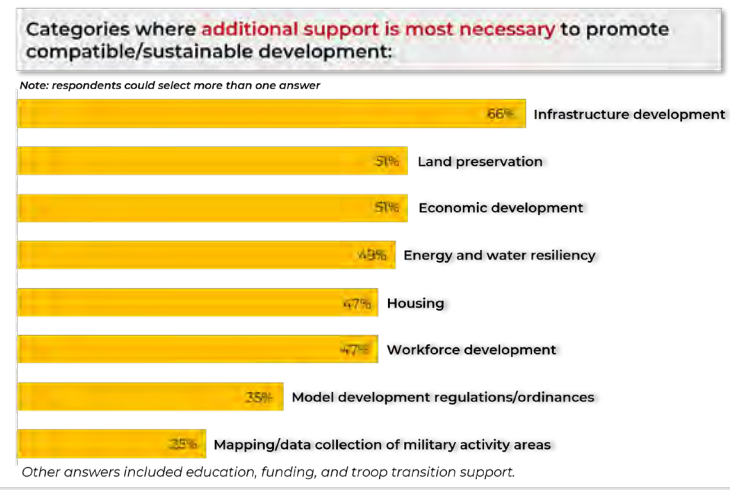
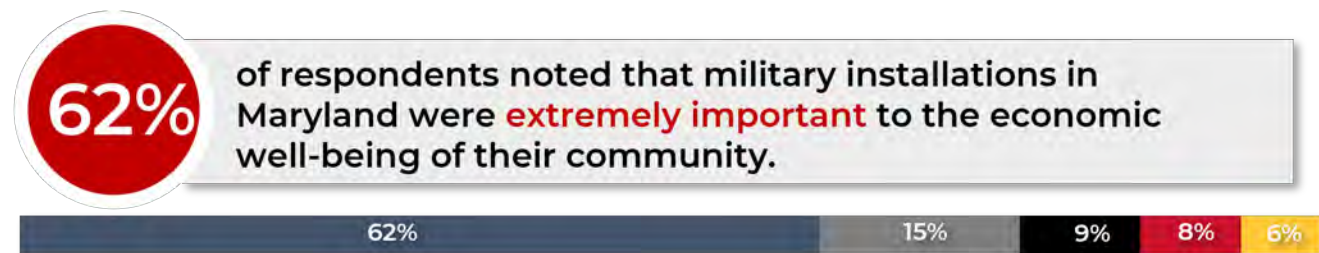
- Installation overviews and descriptions of existing programs and partnerships in place
- Best practices for communication, coordination, and compatible land use
- Compatible Use Study guidance
- Local ordinance development guidance
- Compatibility mapping review tool



# COMPATIBLE USE SURVEY RESULTS

- User Experience Survey published fall/winter 2021
- 130 responses received
- Survey provided insight into information needs, community compatibility topics that should be explored, and provided insight as to how adjacent communities interact with Maryland's military installations.

[View All Survey Results](#)

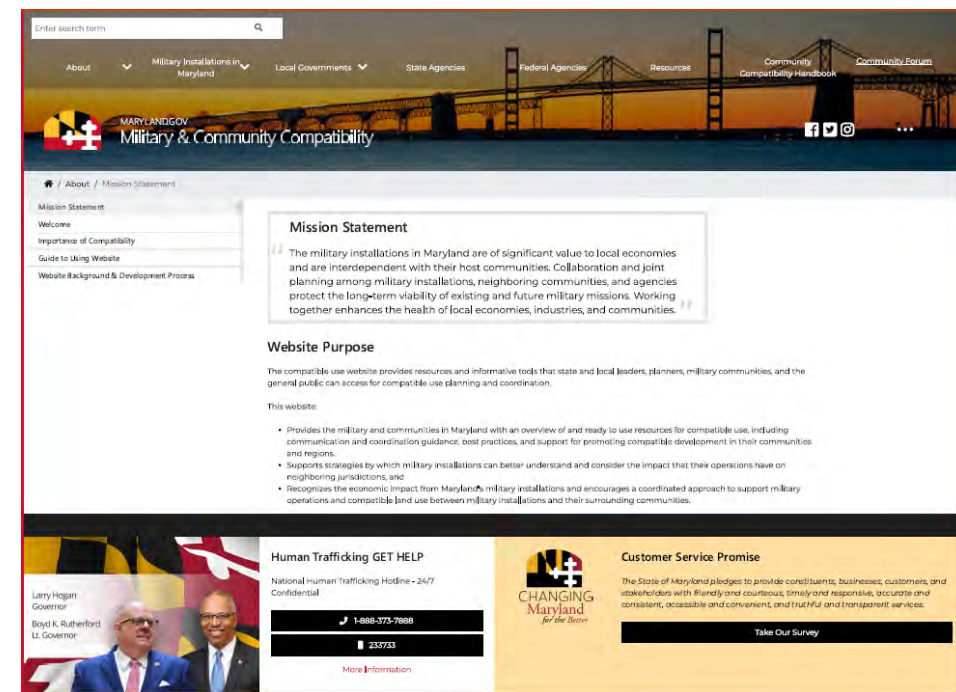


- Top 5 types of information that would help respondents **familiarize themselves** with Maryland's military installations:
- 1 Information about how military operations may affect daily civilian/community activities.
  - 2 Summaries of major military installations and missions in the state of Maryland.
  - 3 Information about how community land use development and civilian activities may affect military operations.
  - 4 Examples of local ordinances that impact compatible use.
  - 5 Information on state and federal grant opportunities that promote compatible use.



# NEXT STEPS

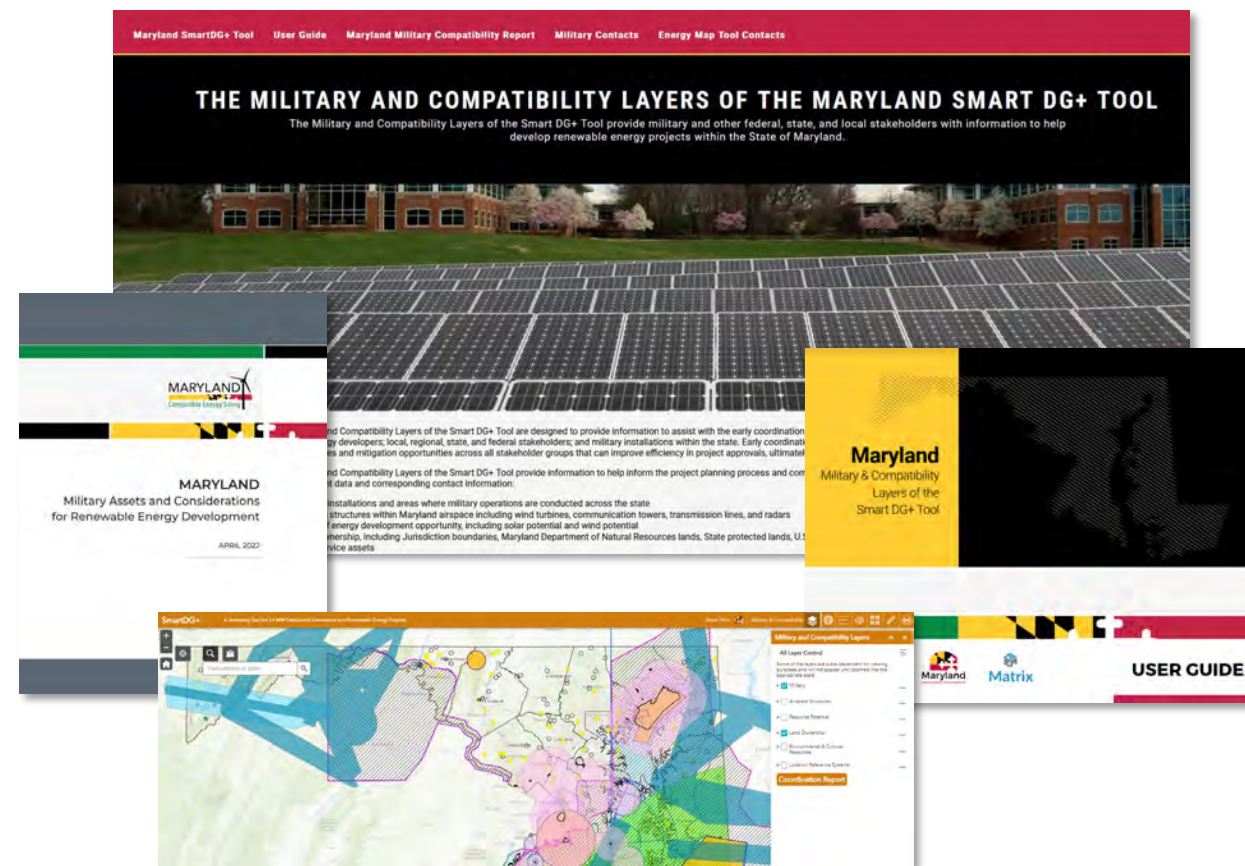
- Complete content development & multi-phase review process
  - Re-engage project stakeholders throughout the spring and share demo website and handbook for additional feedback.
  - Develop sustainability plan.
  - Final presentation to stakeholders & report



For more information, please contact Sarah Diehl ([sarah.diehl@maryland.gov](mailto:sarah.diehl@maryland.gov)) or visit the project website at <https://commerce.maryland.gov/compatibleuse>

# RENEWABLE ENERGY SITING PROJECT

- Purpose
  - Identifies considerations for compatible renewable energy development with military operations.
  - Provides recommendations to enhance existing coordination efforts.
  - Developed military and compatibility layers to facilitate information sharing and early coordination as part of the [SmartDG+ Tool](#).
- Final Energy Siting Compatibility Study and SmartDG+ Tool integration: Spring 2022
- Supplementary report *Military Assets and Considerations for Renewable Energy Development*. reference information and process guide
- Project webpage will be included as part of MDP's Compatible Use website



For more information, please contact Jennifer Chiasson ([jennifer.chiasson@maryland.gov](mailto:jennifer.chiasson@maryland.gov)) or visit the project website at <https://commerce.maryland.gov/compatibleuse>

# CONTACTS

John JT Thomas  
Assist. Dir., MDOT Off. of Plng. & Capital Prgmg.  
Rail & Intermodal Freight  
Ph: 410-865-1332  
Email: [Jthomas33@mdot.maryland.gov](mailto:Jthomas33@mdot.maryland.gov)

Alfred Sundara, AICP  
Manager, Projections and State Data Center  
Ph: 410-767-4002  
Email: [Alfred.Sundara@Maryland.gov](mailto:Alfred.Sundara@Maryland.gov)

Deborah Sward  
Assist. Manager, Geospatial Data & Analysis  
Ph: 410-767-4964  
Email: [Deborah.Sward@Maryland.gov](mailto:Deborah.Sward@Maryland.gov)

Sylvia Mosser, AICP  
Planner, Resource Conservation & Management  
Ph: 410-767-4487  
Email: [Sylvia.Mosser@maryland.gov](mailto:Sylvia.Mosser@maryland.gov)

Shelly Aprill  
Planner, Geospatial Data & Analysis  
Ph: 410-767-4474  
Email: [Shelly.Aprill@Maryland.gov](mailto:Shelly.Aprill@Maryland.gov)

Sarah Diehl  
Planner, Local Assistance & Training  
Ph: 410-767-4547  
Email: [Sarah.Diehl@Maryland.gov](mailto:Sarah.Diehl@Maryland.gov)